

PIQUA, OHIO

AL-5022 (FAA)

VOR-A

PIQUA AIRPORT-HARTZELL FIELD (I17)

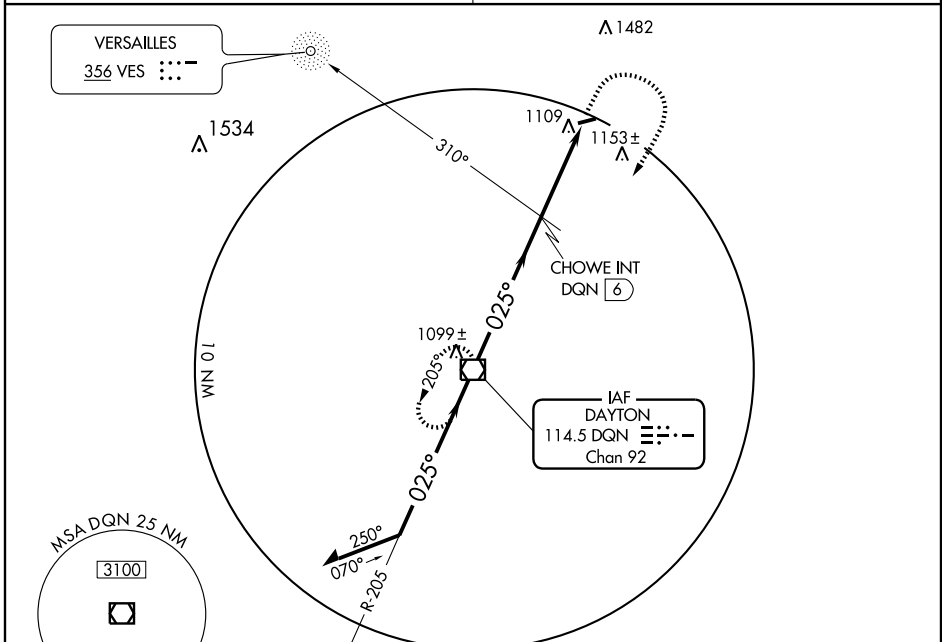
VOR/DME DGN 114.5 Chan 92	APP CRS 025°	Rwy Idg TDZE Apt Elev 994	N/A N/A 994
---	------------------------	---	--

▲ NA Use James M. Cox Dayton Intl altimeter setting.

MISSED APPROACH: Climbing right turn to 3000 direct DGN VOR/DME and hold.

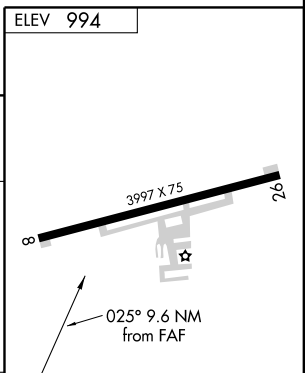
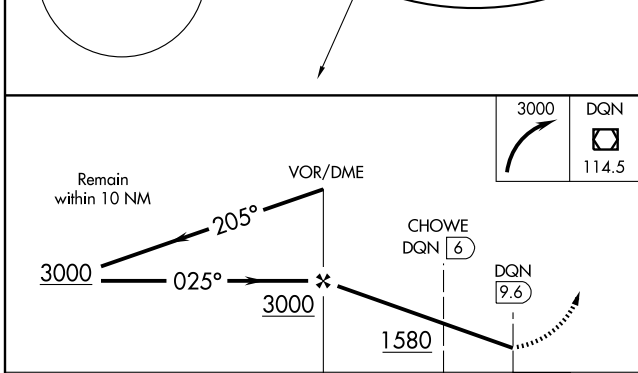
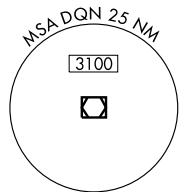
DAYTON APP CON
118.425 134.45 294.5 352.05

UNICOM
123.0 (CTAF) **①**



EC-2, 22 OCT 2009 to 19 NOV 2009

EC-2, 22 OCT 2009 to 19 NOV 2009



	CATEGORY		A		B		C		D	
CIRCLING	1580-1	586 (600-1)	1580-1½	586 (600-1½)	1580-2	586 (600-2)				
CHOWE FIX MINIMUMS										
CIRCLING	1460-1	466 (500-1)	1460-1½	466 (500-1½)	1560-2	566 (600-2)				

ELEV	994
DGN	114.5
MIRL Rwy 8-26 ① REIL Rwys 8 and 26 ①	
FAF to MAP 9.6 NM	
Knots	60 90 120 150 180
Min:Sec	9:36 6:24 4:48 3:50 3:12

PIQUA, OHIO
Amdt 13 09295

40°10'N - 84°19'W

PIQUA AIRPORT-HARTZELL FIELD (I17)

VOR-A