

PIQUA, OHIO

AL-5022 (FAA)

VORTAC ROD 117.5 Chan 122	APP CRS 243°	Rwy Idg TDZE Apt Elev	3997 987 994
---	------------------------	-----------------------------	---

VOR RWY 26

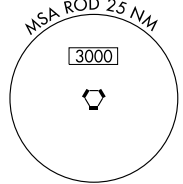
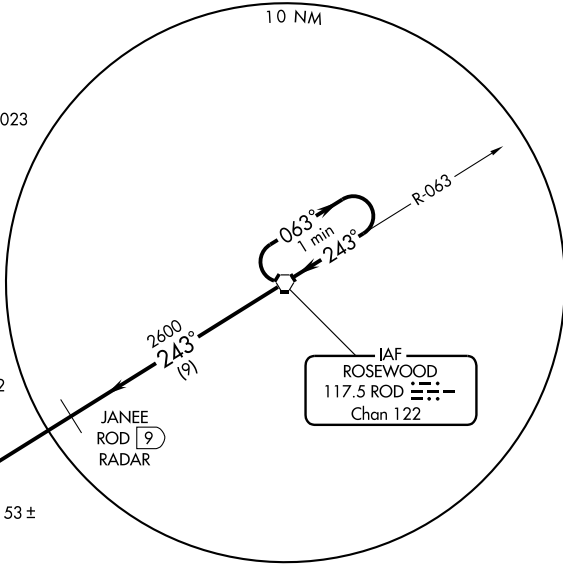
PIQUA AIRPORT-HARTZELL FIELD (I17)

▲ NA Use James M. Cox Dayton Intl altimeter setting. MISSED APPROACH: Climb to 3000 then left turn direct ROD VORTAC and hold.

DAYTON APP CON **118.425 134.45 294.5 352.05** UNICOM **123.0** (CTAF) **①**



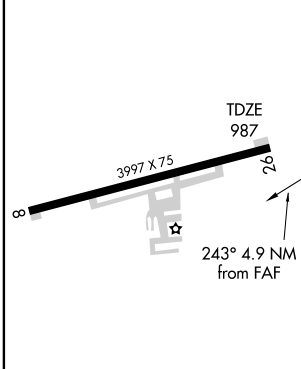
NoPT for arrival on ROD VORTAC airway radials 023 CW 088.



EC-2, 22 OCT 2009 to 19 NOV 2009

EC-2, 22 OCT 2009 to 19 NOV 2009

ELEV 994

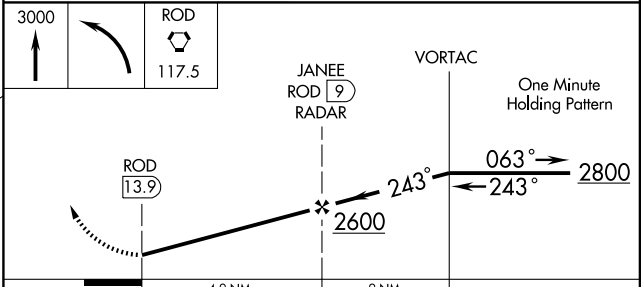


MIRL Rwy 8-26 **①**
REIL Rws 8 and 26 **①**

FAF to MAP 4.9 NM

Knots	60	90	120	150	180
Min:Sec	4:54	3:16	2:27	1:58	1:38

DME or RADAR REQUIRED



CATEGORY	A	B	C	D
S-26	1500-1	513 (600-1)	1500-1½ 513 (600-1½)	1500-1¾ 513 (600-1¾)
CIRCLING	1500-1	506 (600-1)	1500-1½ 506 (600-1½)	1560-2 565 (600-2)

PIQUA, OHIO
Amdt 6A 09295

40°10'N - 84°19'W

VOR RWY 26