

RNAV (GPS) RWY 8

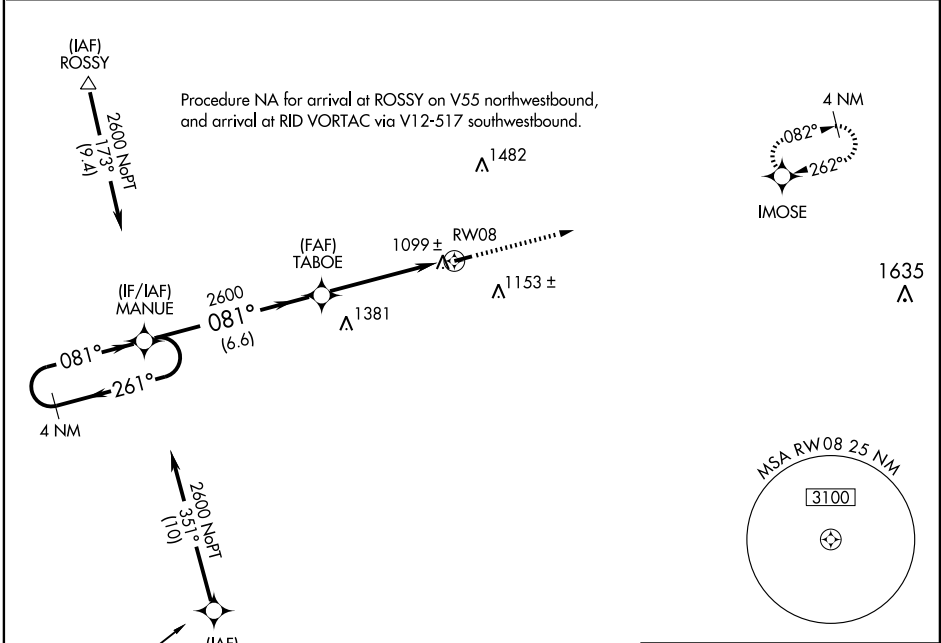
PIQUA AIRPORT-HARTZELL FIELD (I17)

APP CRS 081°	Rwy Idg 3997
	TDZE 994
	Apt Elev 994

▲ NA Use James M. Cox Dayton Intl altimeter setting.
DME/DME RNP-0.3 NA.

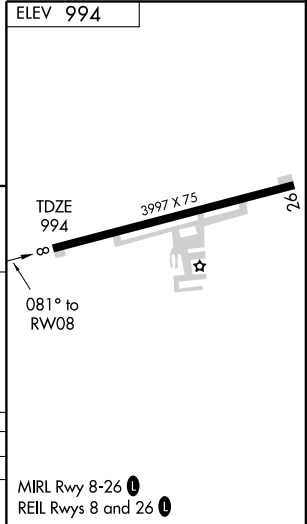
MISSED APPROACH: Climb to 2600 direct IMOSE WP and hold.

DAYTON APP CON 118.425 134.45 294.5 352.05	UNICOM 123.0 (CTAF) 0
--	---------------------------------



EC-2, 22 OCT 2009 to 19 NOV 2009

EC-2, 22 OCT 2009 to 19 NOV 2009



4 NM Holding Pattern	MANUE	TABOE	2600	IMOSE
2600 ← 261° / 081° →	081°	2600		
6.6 NM		4.9 NM		

CATEGORY	A	B	C	D
LNNAV MDA	1400-1	406 (500-1)	1400-1½	406 (500-1½)
CIRCLING	1440-1 446 (500-1)	1460-1 466 (500-1)	1460-1½ 466 (500-1½)	1560-2 566 (600-2)

MIRA Rwy 8-26 0
 REIL Rwy 8 and 26 0