

# RNAV (GPS) RWY 26

ALEXANDRIA/ESLER RGNL (E/SF)

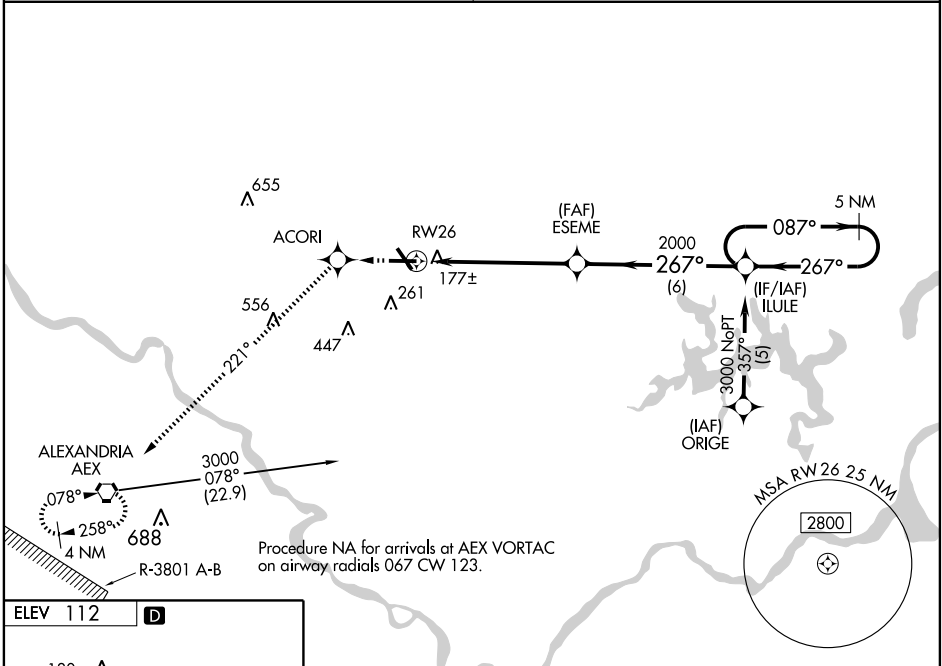
WAAS CH <b>61103</b> <b>W26A</b>	APP CRS <b>267°</b>	Rwy Idg <b>5999</b> TDZE <b>92</b> Apt Elev <b>112</b>
--	------------------------	--

▼ If local altimeter setting not received, use Alexandria Intl altimeter setting and increase all DAs/MDAs 40 feet. VDP NA when using Alexandria Intl altimeter setting. BARO-VNAV NA when using Alexandria Intl altimeter setting.  
 ▲ For uncompensated BARO-VNAV systems, LNAV/VNAV NA below -1.5°C (5°F) or above 49°C (120°F). For inoperative MALSR increase LPV all Cats visibility to 1, and LNAV Cat D visibility to 1¼. DME/DME RNP-0.3 NA.

**MALSR**

**MISSED APPROACH:** Climb to 3000 direct ACORI and via 221° track to AEX VORTAC and hold.

POLK APP CON <b>125.4 302.2</b>	UNICOM <b>122.8 (CTAF)</b>
------------------------------------	-------------------------------



SC-4, 22 OCT 2009 to 19 NOV 2009

SC-4, 22 OCT 2009 to 19 NOV 2009

ELEV 112 **D**

REIL Rwy 8, 14 and 32  
 MIRL Rwy 14-32  
 HIRL Rwy 8-26

3000	ACORI	AEX	5 NM Holding Pattern
↑	221° TRK	116.1	ILULE
ESEME		3000	
* 1 NM to RWY 26		087° →	
* LNAV only. RWY 26		← 267°	
1 NM		2000	
4.7 NM		6 NM	
GS 3.00°		TCH 59	

CATEGORY	A	B	C	D
LPV DA		408-½	316 (300-½)	
LNAV/VNAV DA		451-¾	359 (400-¾)	
LNAV MDA		480-½	388 (400-½)	480-1 388 (400-1)
CIRCLING	580-1	468 (500-1)	580-1½ 468 (500-1½)	680-2 568 (600-2)