

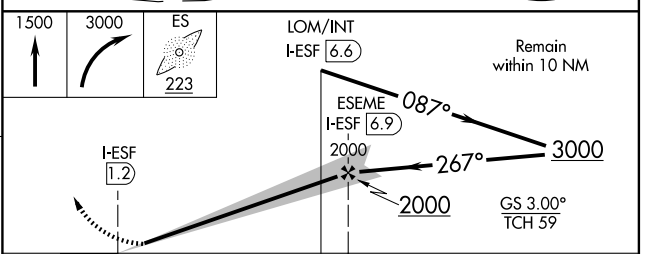
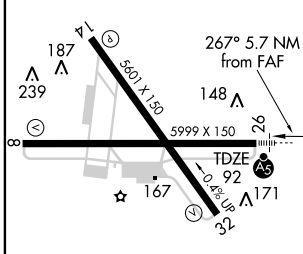
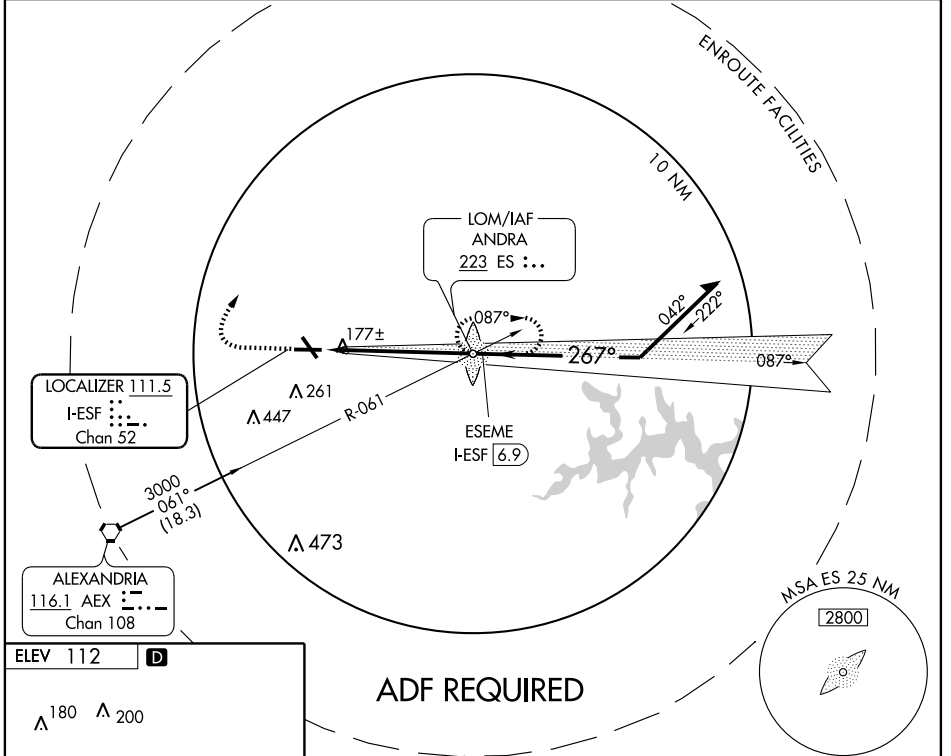
LOC I-ESF 111.5 Chan 52	APP CRS 267°	Rwy Idg TDZE Apt Elev	5999 92 112
--------------------------------------	------------------------	-----------------------------	--

ILS RWY 26

ALEXANDRIA/ESLER RGNL (ESF)

NA * DME Required.	MALSR 	MISSED APPROACH: Climb to 1500 then climbing right turn to 3000 direct ANDRA LOM and hold.
-----------------------	-----------	--

POLK APP CON 125.4 302.2	UNICOM 122.8 (CTAF)
------------------------------------	-------------------------------



CATEGORY	A	B	C	D
S-ILS 26		292-1/2	200 (200-1/2)	
S-LOC 26*		440-1/2	348 (400-1/2)	440-3/4 348 (400-3/4)
CIRCLING	580-1	468 (500-1)	580-1 1/2 468 (500-1 1/2)	680-2 568 (600-2)

SC-4, 22 OCT 2009 to 19 NOV 2009

SC-4, 22 OCT 2009 to 19 NOV 2009