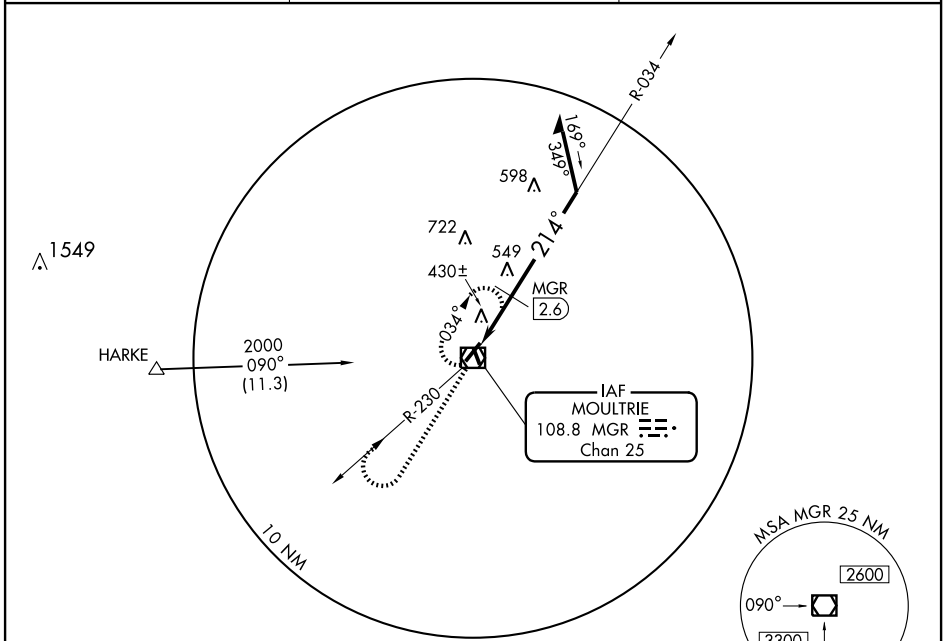


VOR/DME MGR <b>108.8</b> Chan <b>25</b>	APP CRS <b>214°</b>	Rwy Idg <b>5129</b> TDZE <b>294</b> Apt Elev <b>294</b>
---	------------------------	---

**VOR RWY 22**  
MOULTRIE MUNI (MGR)

<p>▼ Obtain local altimeter on CTAF when not received use Valdosta altimeter setting and increase all MDAs 100 feet and visibility Cats B, C and D ¼ mile; DME MINIMUMS visibility Cat C ¼ mile.</p>	<p>MISSED APPROACH: Climb to 2000 then right turn via MGR R-230 to MGR VOR/DME and hold.</p>
--	--

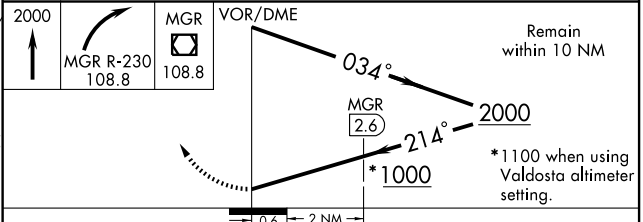
AWOS-3 <b>118.925</b>	VALDOSTA APP CON ★ <b>126.6 285.6</b>	UNICOM <b>122.8 (CTAF) 0</b>
--------------------------	--	---------------------------------



SE-4, 22 OCT 2009 to 19 NOV 2009

SE-4, 22 OCT 2009 to 19 NOV 2009

ELEV <b>294</b>	Rwy 16 Idg 3618'
-----------------	------------------



CATEGORY	A	B	C	D
S-22	1000-1	706 (800-1)	1000-2 706 (800-2)	1000-2½ 706 (800-2½)
CIRCLING	1000-1	706 (800-1)	1000-2 706 (800-2)	1000-2½ 706 (800-2½)
DME MINIMUMS				
S-22	680-1 386 (400-1)		680-1½ 386 (400-1½)	
CIRCLING	740-1 446 (500-1)	760-1 466 (500-1)	760-1½ 466 (500-1½)	860-2 566 (600-2)