

MOULTRIE, GEORGIA

AL-5020 (FAA)

RNAV (GPS) RWY 4

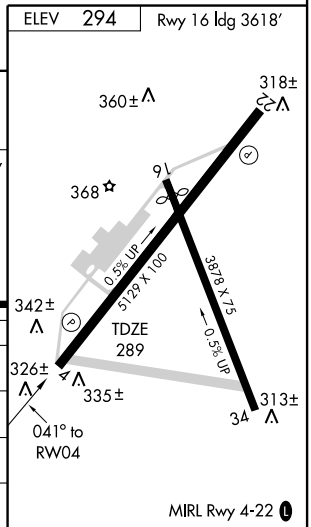
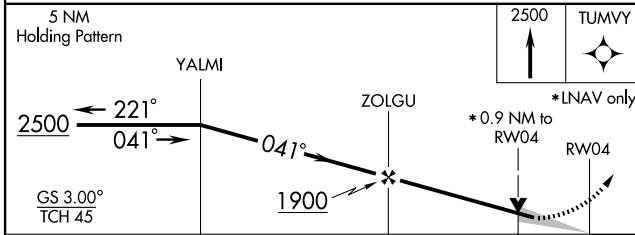
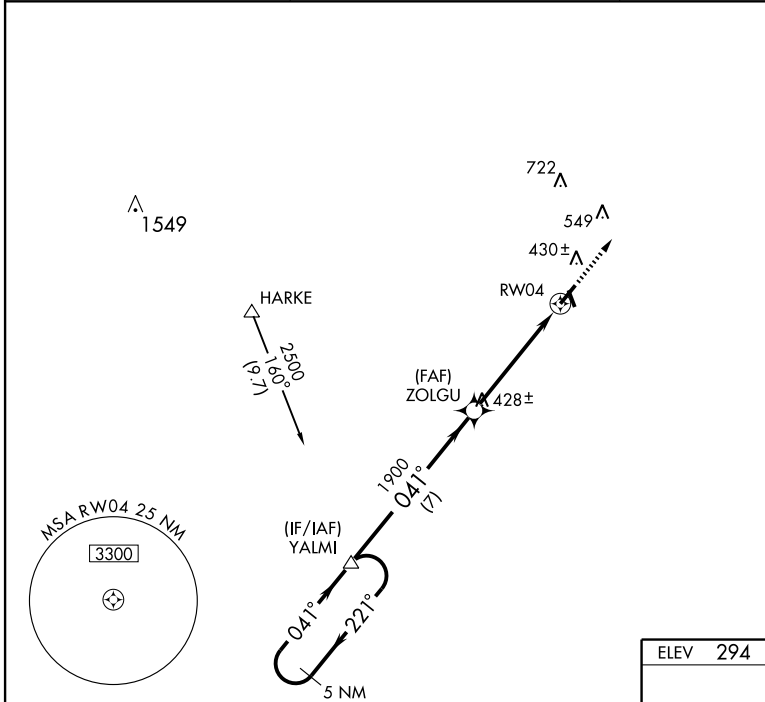
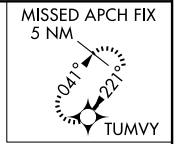
MOULTRIE MUNI (MGR)

WAAS CH 82603 W04A	APP CRS 041°	Rwy ldg 5129 TDZE 289 Apt Elev 294
--	------------------------	---

▼ For uncompensated Baro-VNAV systems, LNAV/VNAV NA below -15°C (5°F) or above 48°C (118°F). If local altimeter setting not received, use Valdosta altimeter setting and increase all DAs 88 feet, and all MDAs 100 feet. Baro-VNAV and VDP NA when using Valdosta altimeter setting.
 ▲ DME/DME RNP-0.3 NA.

MISSED APPROACH:
Climb to 2500 direct TUMVY and hold.

AWOS-3 118.925	VALDOSTA APP CON ★ 126.6 285.6	UNICOM 122.8 (CTAF) 0
--------------------------	--	--



CATEGORY	A	B	C	D
LPV DA		539-1	250 (300-1)	
LNAV/VNAV DA		605-1¼	316 (400-1¼)	
LNAV MDA		600-1	311 (400-1)	
CIRCLING	780-1	486 (500-1)	780-1½ 486 (500-1½)	860-2 566 (600-2)

MOULTRIE, GEORGIA
Orig 07130

31° 05' N - 83° 48' W

RNAV (GPS) RWY 4

SE-4, 22 OCT 2009 to 19 NOV 2009

SE-4, 22 OCT 2009 to 19 NOV 2009