

MOULTRIE, GEORGIA

AL-5020 (FAA)

RNAV (GPS) RWY 22

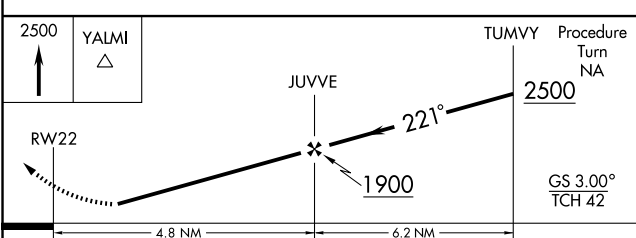
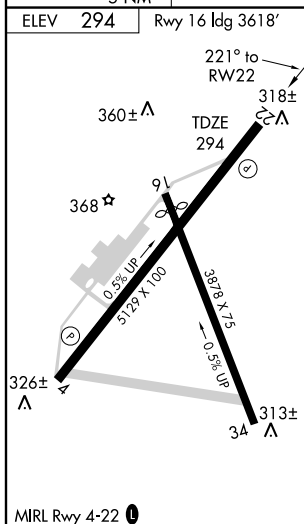
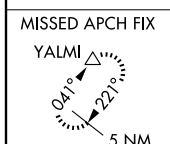
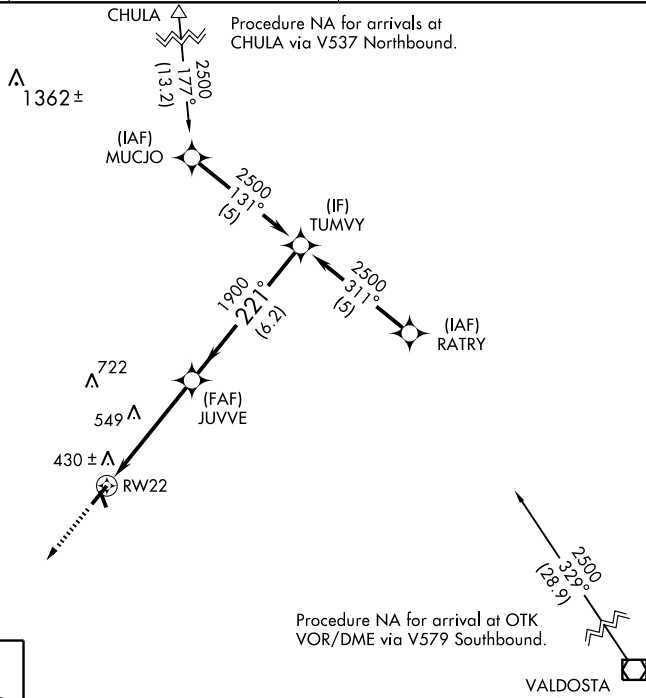
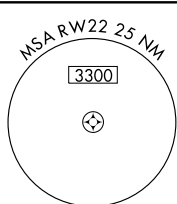
MOULTRIE MUNI (MGR)

WAAS CH 93803 W22A	APP CRS 221°	Rwy ldg 5129 TDZE 294 Apt Elev 294
--	------------------------	---

⚠ If local altimeter setting not received, use Valdosta altimeter setting and increase all DAs 88 feet, and all MDAs 100 feet. For uncompensated Baro-VNAV systems, LNAV/VNAV NA below -15°C (5°F) or above 48°C (118°F). Baro-VNAV NA when using Valdosta altimeter setting. DME/DME RNP-0.3 NA. Visibility reduction by helicopters NA.

MISSED APPROACH:
Climb to 2500 direct YALMI and hold.

AWOS-3 118.925	VALDOSTA APP CON ★ 126.6 285.6	UNICOM 122.8 (CTAF) 0
--------------------------	--	---------------------------------



CATEGORY	A	B	C	D
LPV DA	637-1¼		343 (400-1¼)	
LNAV/VNAV DA	730-1½		436 (500-1½)	
LNAV MDA	800-1	506 (600-1)	800-1½	506 (600-1½)
CIRCLING	800-1	506 (600-1)	800-1½ 506 (600-1½)	860-2 566 (600-2)

MOULTRIE, GEORGIA
Orig 07130

31° 05' N - 83° 48' W

RNAV (GPS) RWY 22

SE-4, 22 OCT 2009 to 19 NOV 2009

SE-4, 22 OCT 2009 to 19 NOV 2009