

TUTUILA, AQ

AL-5018 (FAA)

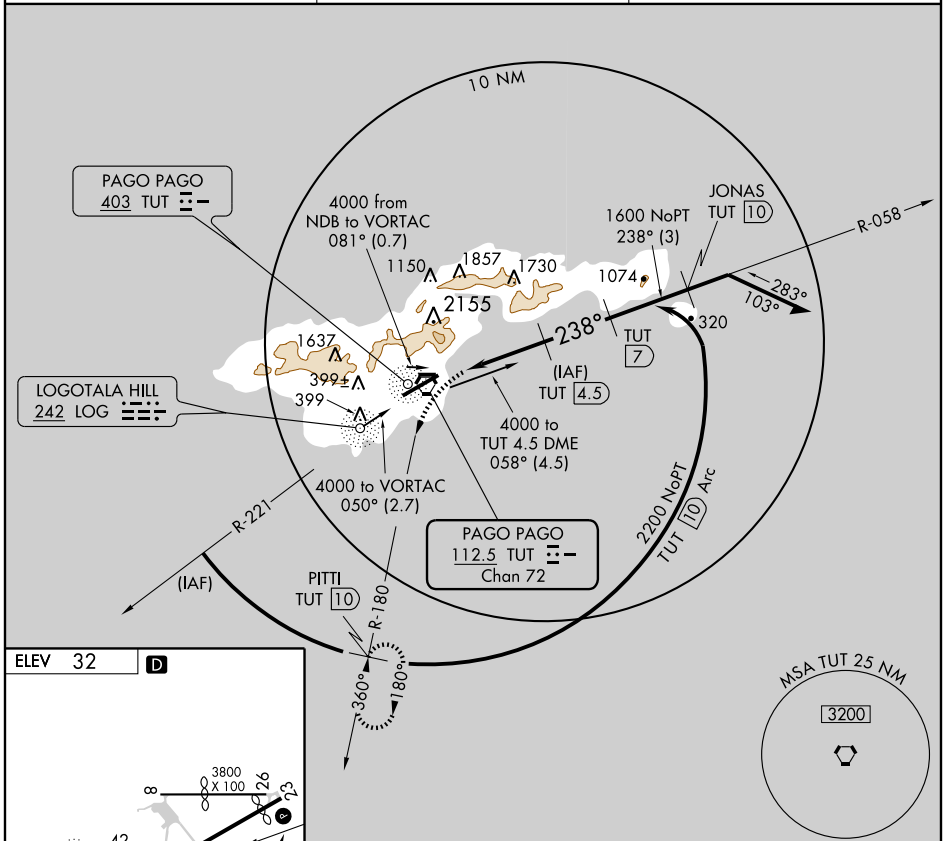
VORTAC TUT <b>112.5</b> Chan <b>72</b>	APP CRS <b>238°</b>	Rwy ldg TDZE Apt Elev	<b>N/A</b> <b>N/A</b> <b>32</b>
--	------------------------	-----------------------------	---------------------------------------

**VOR/DME or TACAN-B**  
TUTUILA/ PAGO PAGO INTL (PPG) (NSTU)

▼ Circling not authorized north of Rwy 5-23.  
No controlled airspace below 9500 feet.  
When local altimeter setting not received, procedure NA.

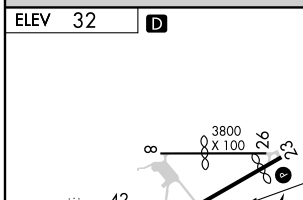
MISSED APPROACH: Climbing left turn to 3000  
via TUT R-180 to PITTI 10 DME and hold.

FALEOLO APP CON <b>126.9</b>	CTAF <b>122.9</b>	<b>118.30</b>
---------------------------------	-------------------	---------------



PAC, 22 OCT 2009 to 17 DEC 2009

PAC, 22 OCT 2009 to 17 DEC 2009



3000	PITTI TUT 10	TUT 4.5	Remain within 10 NM	
TUT R-180 112.5	Maintain 3200 or above until established outbound for procedure turn.	JONAS TUT 10	058°	
VORTAC TUT 1.5		TUT 7	238°	2200
1.5	3 NM	2.5 NM	3 NM	2200
CATEGORY	A	B	C	D
CIRCLING	560-1	528 (600-1)	700-1¾ 668 (700-1¾)	700-2 668 (700-2)

TUTUILA, AQ  
Amdt 5C 09071

TUTUILA/ PAGO PAGO INTL (PPG) (NSTU)  
14° 20'S-170° 43'W **VOR/DME or TACAN-B**