

TUTUILA, AQ

AL-5018 (FAA)

VORTAC TUT 112.5 Chan 72	APP CRS 048°	Rwy ldg TDZE Apt Elev	N/A N/A 32
---------------------------------------	------------------------	-----------------------------	---------------------------------------

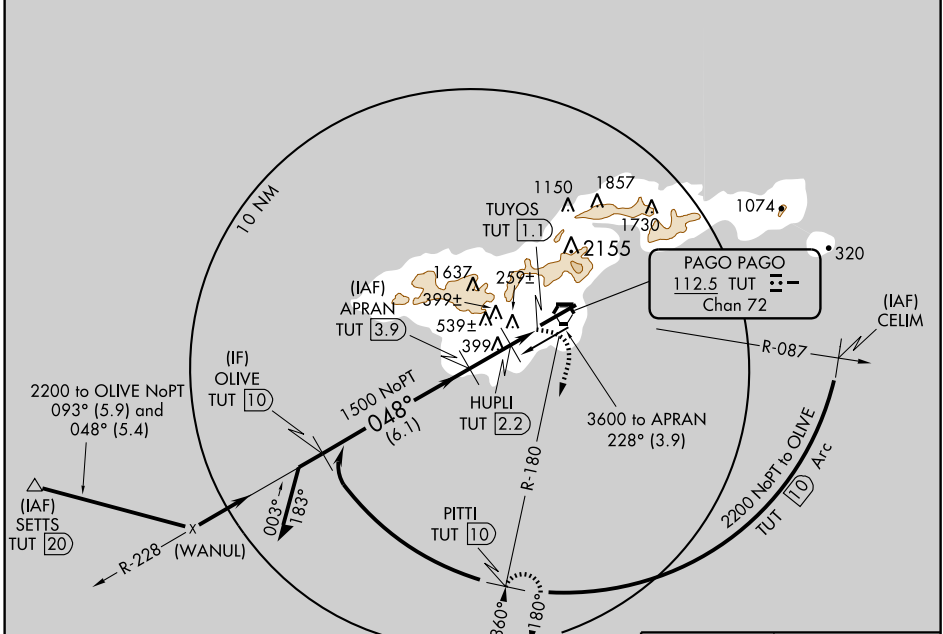
VOR/DME or TACAN-A

TUTUILA/ PAGO PAGO INTL (PPG) (NSTU)

▼ Circling NA N of Rwy 5-23. No controlled airspace below 9500'. When local altimeter setting not received, procedure NA.

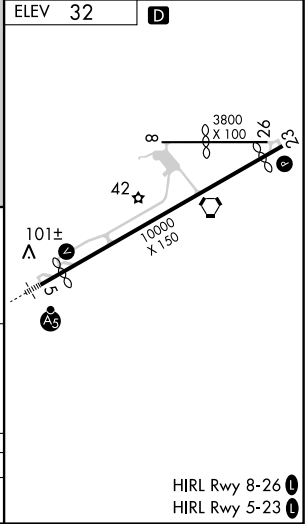
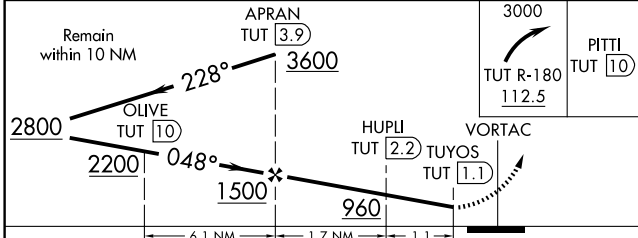
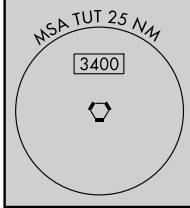
MISSED APPROACH: Climbing right turn to 3000 via TUT VORTAC R-180 to PITTI/10 DME and hold, continue climb-in-hold to 3000.

FALEOLO APP CON 126.9	CTAF 122.9	118.3 0
---------------------------------	-------------------	-----------------------



PAC, 22 OCT 2009 to 17 DEC 2009

PAC, 22 OCT 2009 to 17 DEC 2009



CATEGORY	A	B	C	D
CIRCLING	700-1	668 (700-1)	700-1¾ 668 (700-1¾)	700-2 668 (700-2)

HIRL Rwy 8-26 **0**
HIRL Rwy 5-23 **0**

TUTUILA, AQ
Amdt 4A 09071

TUTUILA/ PAGO PAGO INTL (PPG) (NSTU)
14° 20'S-170° 43'W
VOR/DME or TACAN-A