

TUTUILA, AQ

AL-5018 (FAA)

VOR-D

VORTAC TUT <b>112.5</b> Chan <b>72</b>	APP CRS <b>048°</b>	Rwy Idg TDZE Apt Elev	<b>N/A</b> <b>N/A</b> <b>32</b>
--	------------------------	-----------------------------	---------------------------------------

TUTUILA/ PAGO PAGO INTL (PPG) (NSTU)

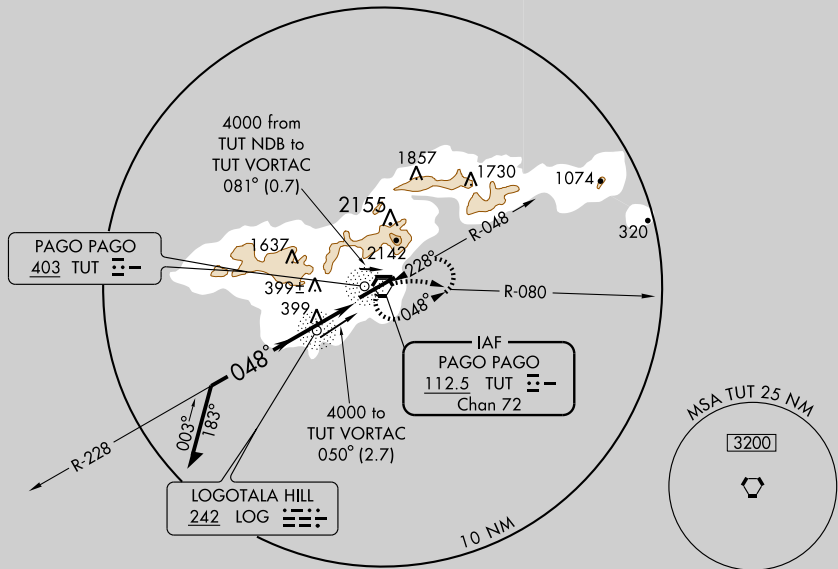
**T** Circling not authorized north of Rwy 5-23.  
**A** When control zone not in effect:  
 1. No control airspace below 9500'.  
 2. Contact NANTI ACC for traffic advisories.

MISSED APPROACH: Climbing right turn to 4000 via R-080 then direct TUT VORTAC and hold.

FALEOLO APP CON  
**126.9**

CTAF **122.9**

**118.30**

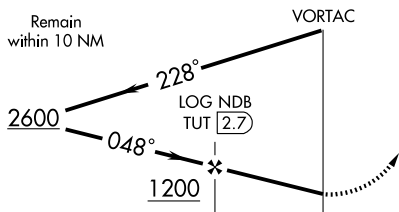


PAC, 22 OCT 2009 to 17 DEC 2009

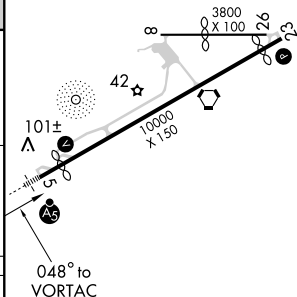
PAC, 22 OCT 2009 to 17 DEC 2009

ELEV 32 **D**

Remain within 10 NM



4000	TUT
TUT R-080	112.5
112.5	112.5



CATEGORY	A	B	C	D
CIRCLING	1100-1¼ 1069 (1100-1¼)	1100-1½ 1069 (1100-1½)	1100-3	1069 (1100-3)
ADF or DME MINIMUMS				
CIRCLING	660-1 628 (700-1)	700-1¾ 668 (700-1¾)	700-2 668 (700-2)	

HIRL Rwy 8-26 **1**  
HIRL Rwy 5-23 **1**

TUTUILA, AQ  
Amdt 5A 09071

TUTUILA/ PAGO PAGO INTL (PPG) (NSTU)

14° 20' S-170° 43' W

VOR-D