


TUTUILA, AQ

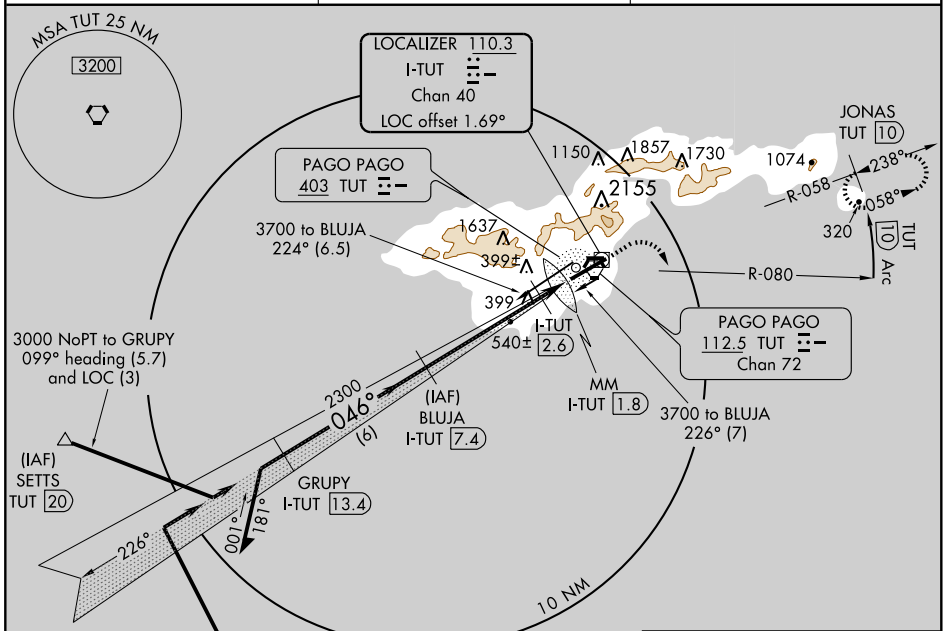
AL-5018 (FAA)

LOC/DME I-TUT 110.3 Chan 40	APP CRS 046°	Rwy Idg TDZE Apt Elev	9000 30 32
---	------------------------	-----------------------------	---------------------------------------

ILS/DME RWY 5
TUTUILA/ PAGO PAGO INTL (PPG) (NSTU)

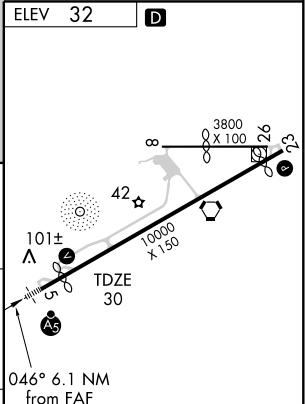
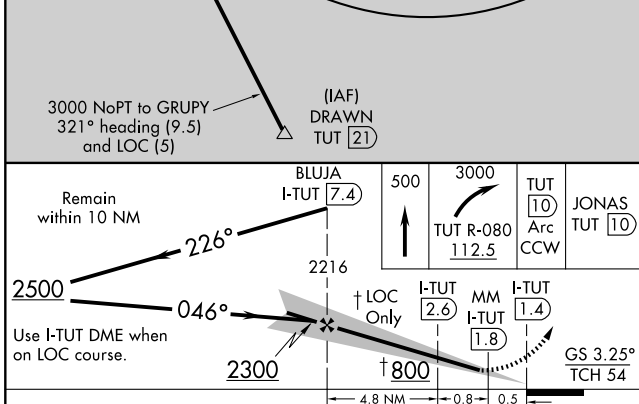
<p>⚠ Circling not authorized north of Rwy 5-23. No controlled airspace below 9500 feet. When local altimeter setting not received, procedure NA.</p>	<p>MALSR </p>	<p>MISSED APPROACH: Climb to 500 then climbing right turn to 3000 via TUT R-080 and 10 DME Arc CCW to JONAS 10 DME and hold.</p>
--	---	--

FALEOLO APP CON 126.9	CTAF 122.9	118.30
---------------------------------	-------------------	---------------



PAC, 22 OCT 2009 to 17 DEC 2009

PAC, 22 OCT 2009 to 17 DEC 2009



CATEGORY	A	B	C	D
S-ILS 5		281-1/2	250 (300-1/2)	
S-LOC 5	Straight-in minima NA, CIRCLING MINIMA APPLY			
CIRCLING	540-1	508 (600-1)	700-1 3/4 668 (700-1 3/4)	700-2 668 (700-2)

TUTUILA, AQ
Amdt 13D 09071

TUTUILA/ PAGO PAGO INTL (PPG) (NSTU)
14° 20' S-170° 43' W

ILS/DME RWY 5

HIRL Rwy 8-26
HIRL Rwy 5-23