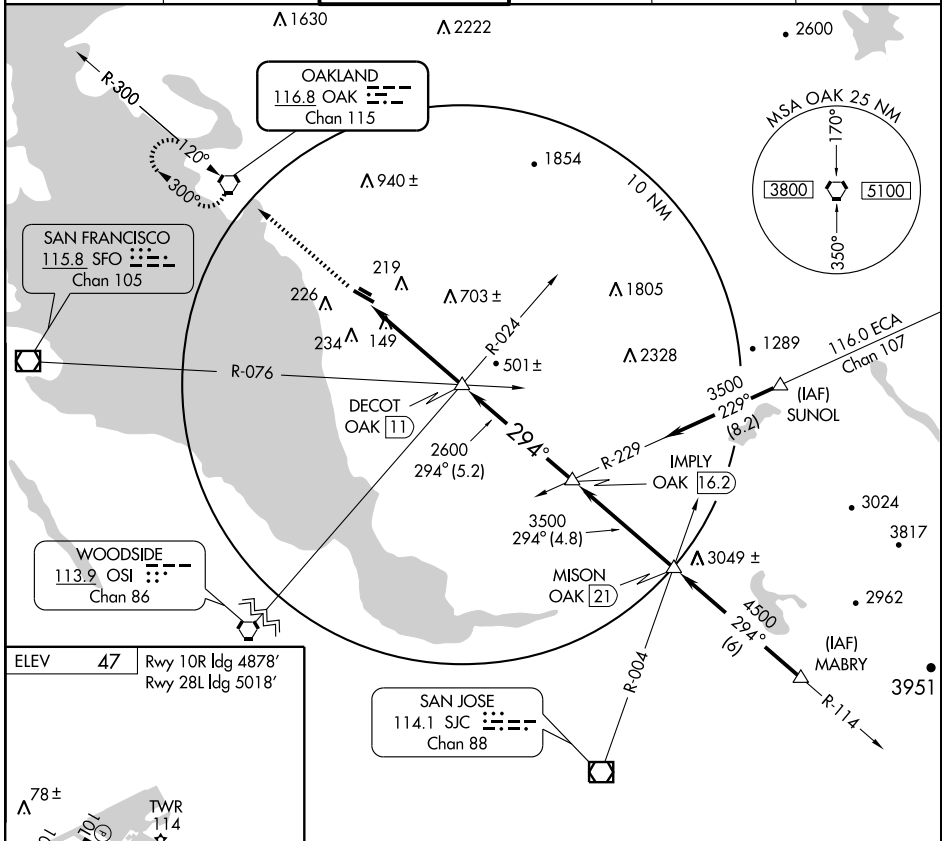


VOR or GPS-A  
HAYWARD EXECUTIVE (HWD)

VORTAC OAK <b>116.8</b> Chan 115	APP CRS <b>294°</b>	Rwy ldg TDZE Apt Elev	<b>N/A</b> <b>N/A</b> <b>47</b>
--	------------------------	-----------------------------	---------------------------------------

**⚠** Circling not authorized north of Rwy 10L-28R. **⚠** MISSED APPROACH: Climb to 2000 direct to OAK VORTAC and hold.

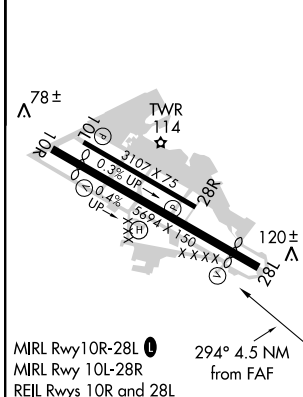
ATIS <b>126.7</b>	NORCAL APP CON <b>124.4 351.8</b>	<b>HAYWARD TOWER*</b> <b>120.2 (CTAF) 0 257.8</b>	GND CON <b>121.4</b>	CLNC DEL <b>128.05</b>	UNICOM <b>122.95</b>
----------------------	--------------------------------------	--	-------------------------	---------------------------	-------------------------



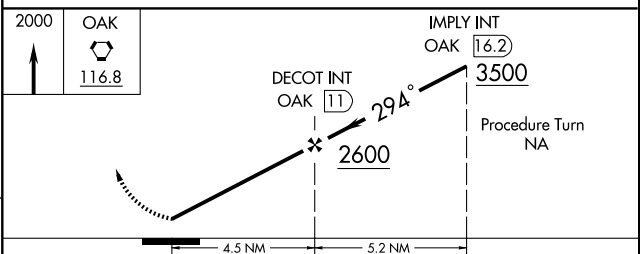
SW-2, 22 OCT 2009 to 19 NOV 2009

SW-2, 22 OCT 2009 to 19 NOV 2009

ELEV 47	Rwy 10R ldg 4878'
	Rwy 28L ldg 5018'



FAF to MAP 4.5 NM					
Knots	60	90	120	150	180
Min:Sec	4:30	3:00	2:15	1:48	1:30



CATEGORY	A	B	C	D
CIRCLING	800-1 753 (800-1)	800-1¼ 753 (800-1¼)	800-2¼ 753 (800-2¼)	800-2½ 753 (800-2½)