

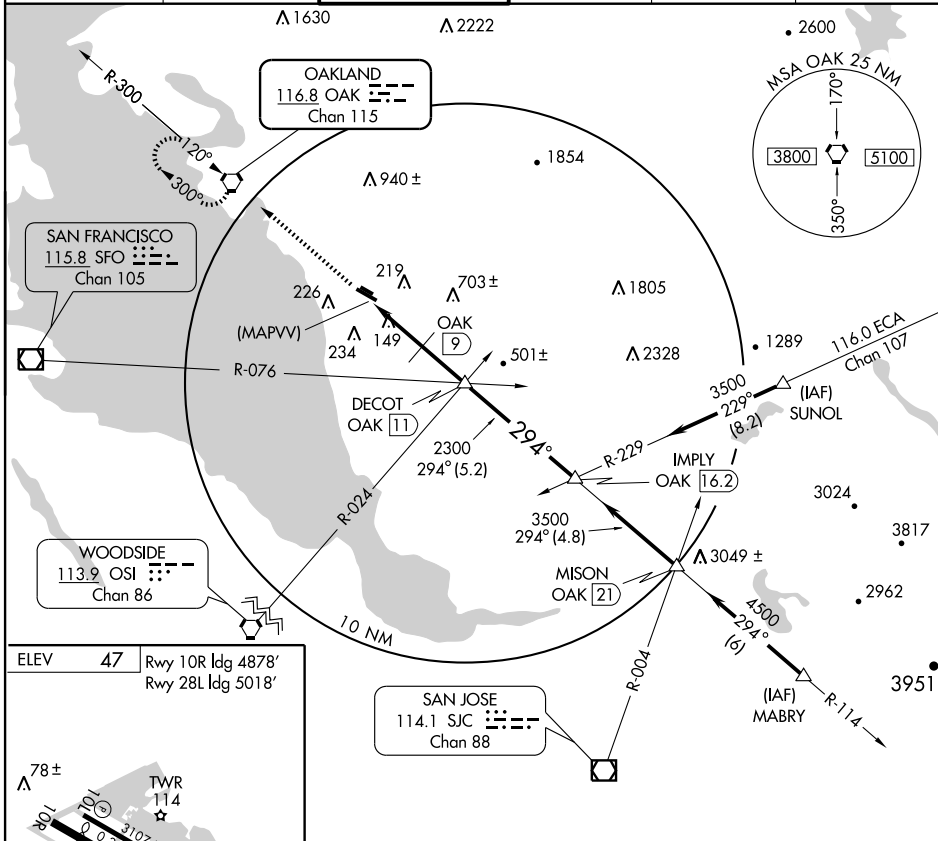
VOR/DME or GPS-B HAYWARD EXECUTIVE (HWD)

VORTAC OAK 116.8 Chan 115	APP CRS 294°	Rwy ldg TDZE Apt Elev	N/A N/A 47
--	------------------------	-----------------------------	---------------------------------------

⚠ Circling not authorized north of Rwy 10L-28R.

MISSED APPROACH: Climb to 2000 direct to OAK VORTAC and hold.

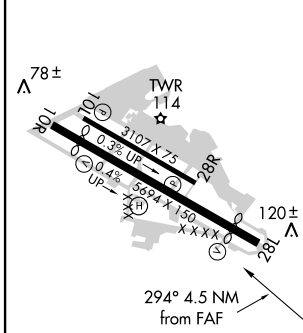
ATIS 126.7	NORCAL APP CON 124.4 351.8	HAYWARD TOWER* 120.2 (CTAF) 0 257.8	GND CON 121.4	CLNC DEL 128.05	UNICOM 122.95
----------------------	--------------------------------------	--	-------------------------	---------------------------	-------------------------



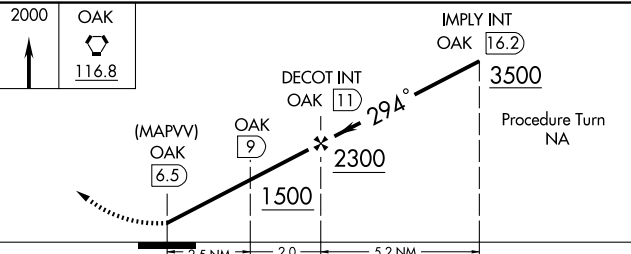
SW-2, 22 OCT 2009 to 19 NOV 2009

SW-2, 22 OCT 2009 to 19 NOV 2009

ELEV 47	Rwy 10R ldg 4878'	Rwy 28L ldg 5018'
----------------	-------------------	-------------------



MIRL Rwy 10R-28L
MIRL Rwy 10L-28R
REIL Rws 10R and 28L



CATEGORY	A	B	C	D
CIRCLING	540-1	493 (500-1)	540-1½ 493 (500-1½)	600-2 553 (600-2)