

RNAV (GPS) Y RWY 28L

HAYWARD EXECUTIVE (HWD)

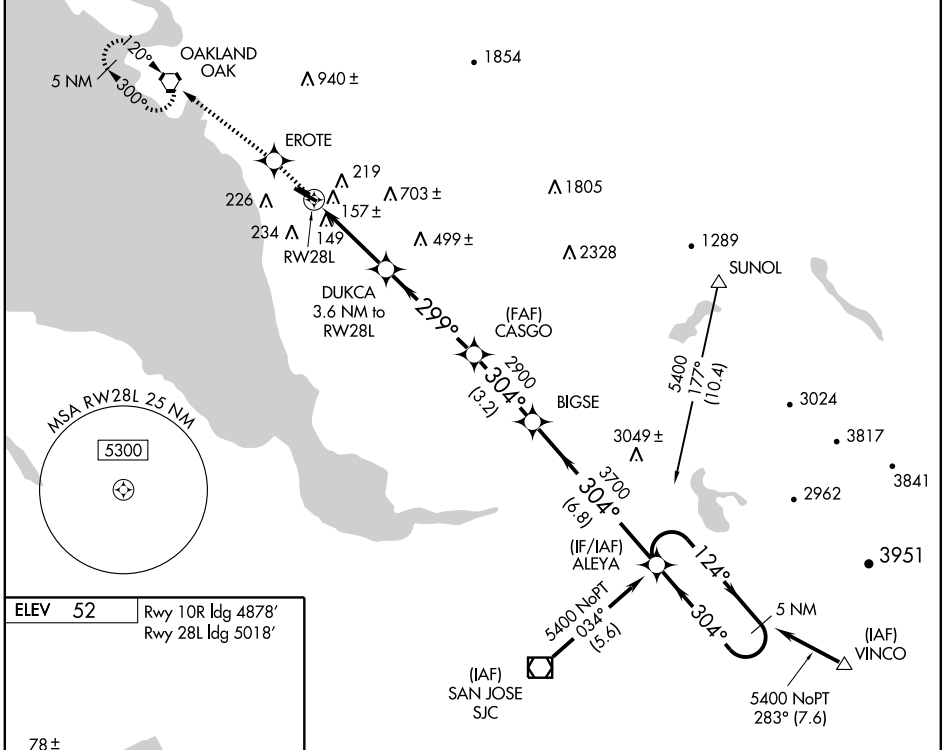
APP CRS 299°	Rwy ldg 5018 TDZE 50 Apt Elev 52
------------------------	---

▽ Circling NA north of Rwy 10L-28R. DME/DME RNP-0.3 NA.
▲ If local altimeter setting not received, use Oakland altimeter setting and increase all MDAs 20 feet. Visibility reduction by helicopters NA.

MISSED APPROACH: Climb to 2000 direct EROTE and via 292° track to OAK VORTAC and hold.

ATIS 126.7	NORCAL APP CON 124.4 351.8	HAYWARD TOWER* 120.2 (CTAF) 0 257.8	GND CON 121.4	CLNC DEL 128.05	UNICOM 122.95
----------------------	--------------------------------------	---	-------------------------	---------------------------	-------------------------

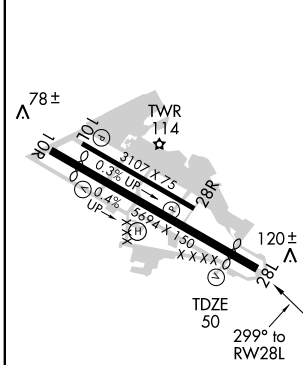
Procedure NA for arrivals at SUNOL via V301 northwest bound and arrivals at VINCO via V107 southeast bound.



SW-2, 22 OCT 2009 to 19 NOV 2009

SW-2, 22 OCT 2009 to 19 NOV 2009

ELEV 52	Rwy 10R ldg 4878'
	Rwy 28L ldg 5018'



MIRL Rwy 10R-28L
 MIRL Rwy 10L-28R
 REIL Rwy 10R and 28L

2000	EROTE	OAK	VGSJ and descent angles not coincident.	
↑	292° track	304°	BIGSE	ALEYA 5 NM Holding Pattern
	DUKCA 3.6 NM to RWY 28L	CASGO		
	3.34° TCH 35	299°	3700	124° / 304°
	3.6 NM	4.4 NM	3.2 NM	6.8 NM
CATEGORY	A	B	C	D
RNAV MDA	460-1	410 (500-1)	460-1¼	410 (500-1¼)
CIRCLING	540-1	488 (500-1)	540-1½	620-2
			488 (500-1½)	568 (600-2)