

RNAV (GPS) RWY 5

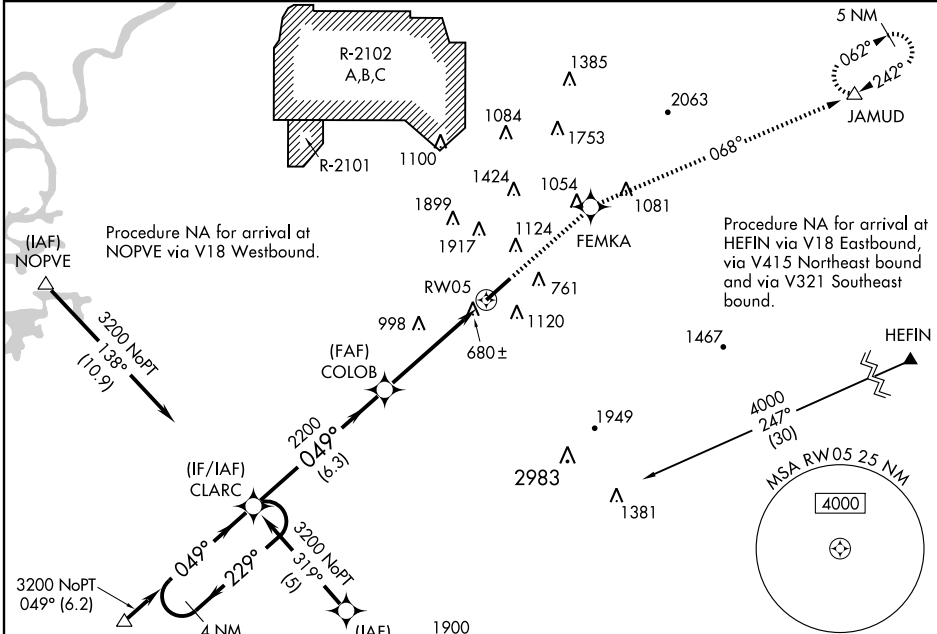
ANNISTON METROPOLITAN (ANB)

WAAS CH 78106 W05A	APP CRS 049°	Rwy Idg TDZE 595 Apt Elev 612
--	------------------------	---

▼ Circling NA North of Rwy 5/23. DME/DME RNP-0.3 NA. When local altimeter setting not received, use Talladega altimeter setting and increase all DAs 34 feet and all MDAs 40 feet and increase circling Cat A, C, and D visibility 1/4 mile. For inoperative MALSRR increase LPV visibility all Cats to 1/4, increase LNAV Cat A visibility to 1 mile.

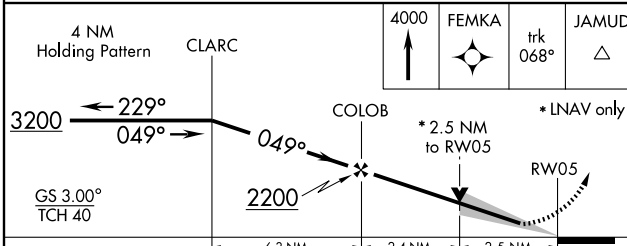
MALSRR
AS
MISSED APPROACH: Climb to 4000 direct FEMKA and via 068° track to JAMUD and hold.

ASOS 119.675	BIRMINGHAM APP CON 125.45 381.5	CTAF 123.60	UNICOM 123.0
------------------------	---	-----------------------	------------------------



SE-4, 22 OCT 2009 to 19 NOV 2009

SE-4, 22 OCT 2009 to 19 NOV 2009



CATEGORY	A	B	C	D
LPV DA	918-3/4 323 (400-3/4)			
LNAV MDA	1420-3/4	825 (900-3/4)	1420-2 825 (900-2)	1420-2 1/4 825 (900-2 1/4)
CIRCLING	1480-1 868 (900-1)	1480-1 1/4 868 (900-1 1/4)	1480-2 1/2 868 (900-2 1/2)	1480-2 3/4 868 (900-2 3/4)

REIL Rwy 23
HIRL Rwy 5-23