

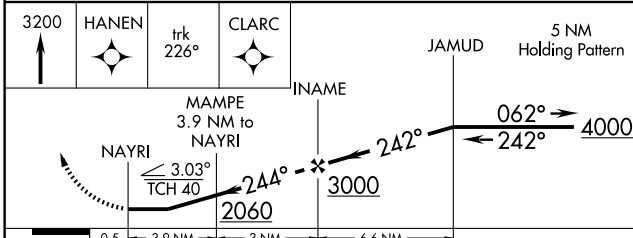
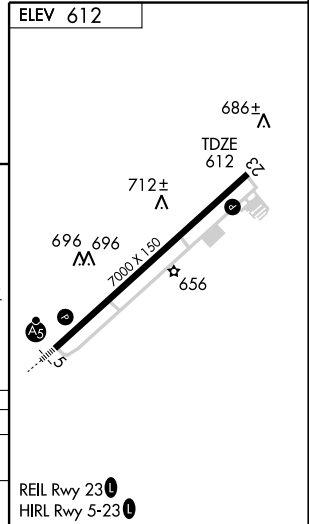
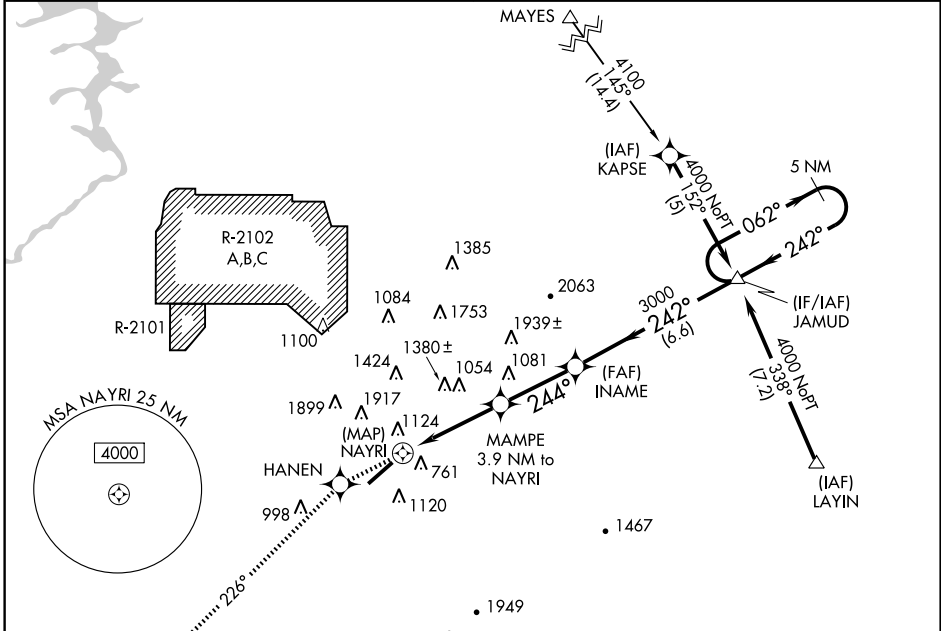
RNAV (GPS) RWY 23

ANNISTON METROPOLITAN (ANB)

APP CRS 244°	Rwy Idg TDZE Apt Elev	7000 612 612
------------------------	-----------------------------	-----------------------------------------

MISSED APPROACH: Climb to 3200 direct HANEN and via 226° track to CLARC and hold.

<p>▼ Circling NA North of Rwy 5-23. DME/DME RNP-0.3 NA. ▲ Visibility reduction by helicopters NA. When local altimeter setting not received, use Talladega altimeter setting and increase all MDAs 40 feet.</p>		CTAF 123.6	UNICOM 123.0
ASOS 119.675	BIRMINGHAM APP CON 125.45 381.5		



CATEGORY	A	B	C	D
LNVA MDA	1700-1¼ 1088 (1100-1¼)	1700-1½ 1088 (1100-1½)	1700-3	1088 (1100-3)
CIRCLING	1700-1¼ 1088 (1100-1¼)	1700-1½ 1088 (1100-1½)	1700-3	1088 (1100-3)

REIL Rwy 23
HIRL Rwy 5-23

SE-4, 22 OCT 2009 to 19 NOV 2009

SE-4, 22 OCT 2009 to 19 NOV 2009