

MINOT, NORTH DAKOTA

# TACAN RWY 29

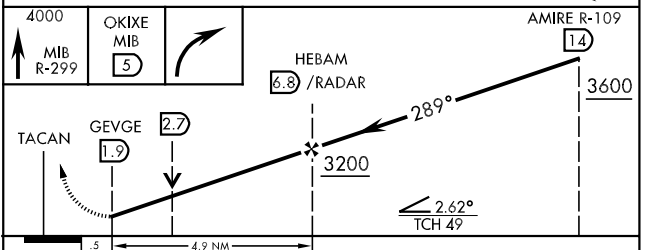
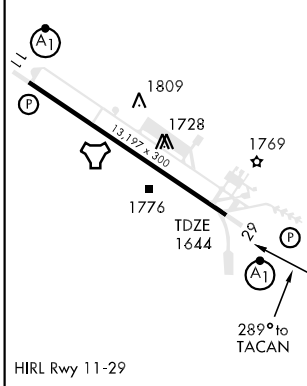
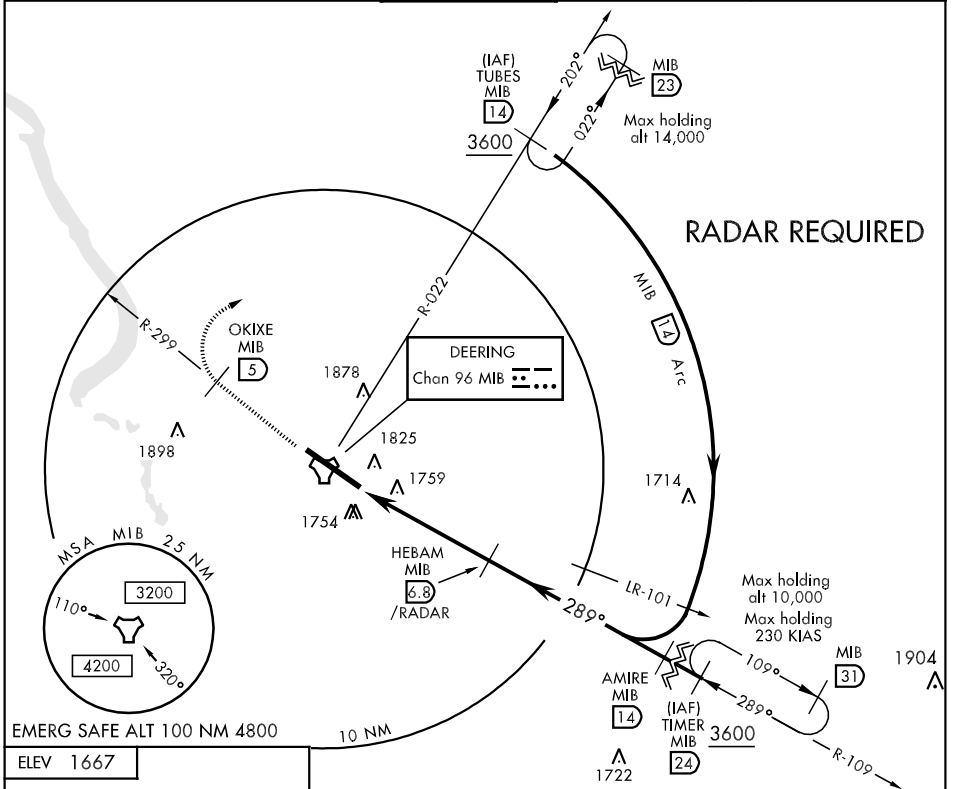
TACAN MIB Chan <b>96</b>	APCH CRS <b>289°</b>	Rwy Idg <b>13,197</b> TDZE <b>1644</b> Arpt Elev <b>1667</b>	AL-5013 [USAF]	MINOT AFB (KMIB)
-----------------------------	-------------------------	--	----------------	------------------

\* When ALS inop, increase CAT ABC RVR to 50 and vis to 1 mile, CAT D RVR to 60 and vis to 1½ miles, CAT E vis to 1½ miles.  
 \*\* Circling N not authorized.



MISSED APPROACH: Climb to 4000 via MIB R-299. At OKIXE turn right direct TUBES and hold.

ATIS ★ <b>278.8</b>	MINOT APP CON <b>119.6 363.8</b>	MINOT TOWER ★ <b>120.65 253.5</b>	GND CON <b>134.0 275.8</b>	CLNC DEL <b>326.2</b>
------------------------	-------------------------------------	--------------------------------------	-------------------------------	--------------------------



CATEGORY	A	B	C	D	E
S-29 *	2040/24 396 (400-½)		2040/40 396 (400-¾)		2040/50 396 (400-1)
CIRCLING**	2120-1 453 (500-1)		2120-1½ 453 (500-1½)	2220-2 553 (600-2)	

MINOT, NORTH DAKOTA  
Amdt 1 07354

48°25'N-101°21'W

MINOT AFB (KMIB)

# TACAN RWY 29

NC-1, 22 OCT 2009 to 19 NOV 2009

NC-1, 22 OCT 2009 to 19 NOV 2009