

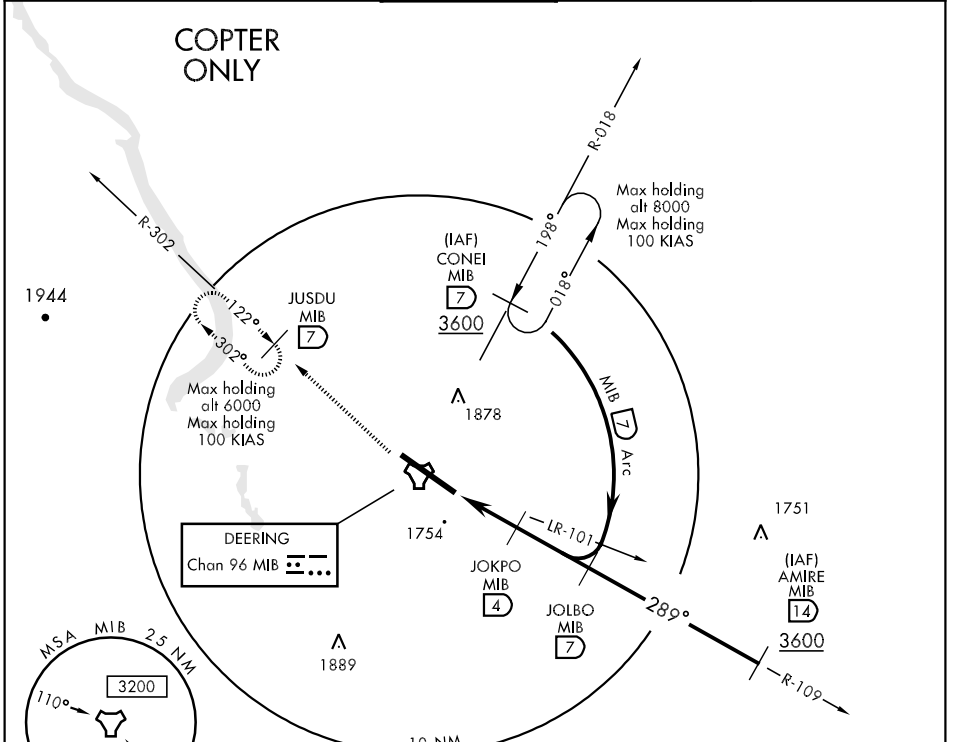
MINOT, NORTH DAKOTA

# COPTER TACAN 289°

TACAN MIB Chan <b>96</b>	APCH CRS <b>289°</b>	Rwy ldg <b>13,197</b> TDZE <b>1644</b> Arpt Elev <b>1667</b>	AL-5013 [USAF]	MINOT AFB (KMIB)
-----------------------------	-------------------------	--	----------------	------------------

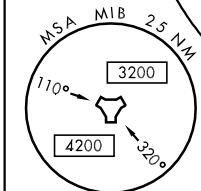
* When ALS inop, increase RVR to 24 and vis to ½ mile.	ALSF-1 	MISSED APPROACH: Climb to 3600 via MIB R-302 direct JUSDU MIB 7 DME and hold.
--	------------	---

ATIS ★ <b>278.8</b>	MINOT APP CON <b>119.6 363.8</b>	MINOT TOWER ★ <b>120.65 253.5</b>	GND CON <b>134.0 275.8</b>	CLNC DEL <b>326.2</b>
------------------------	-------------------------------------	--------------------------------------	-------------------------------	--------------------------

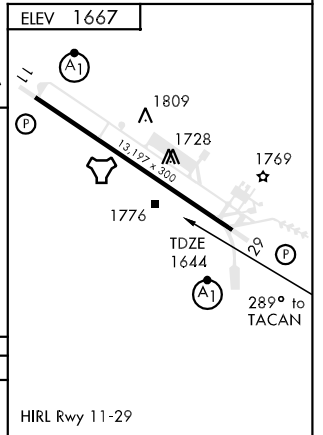
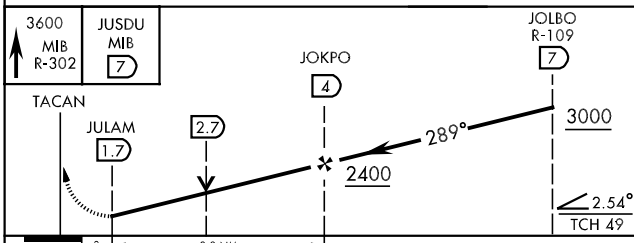


NC-1, 22 OCT 2009 to 19 NOV 2009

NC-1, 22 OCT 2009 to 19 NOV 2009



EMERG SAFE ALT 100 NM 4800



CATEGORY	COPTER		
H-289° *	2040/12	396	(400-¼)

MINOT, NORTH DAKOTA      48°25'N-101°21'W      MINOT AFB (KMIB)

Amdt 2 08213

# COPTER TACAN 289°