

MUNCIE, INDIANA

AL-5011 (FAA)

VOR/DME MIE 114.4 Chan 91	APP CRS 197°	Rwy Idg 4998 TDZE 936 Apt Elev 937
---	------------------------	---

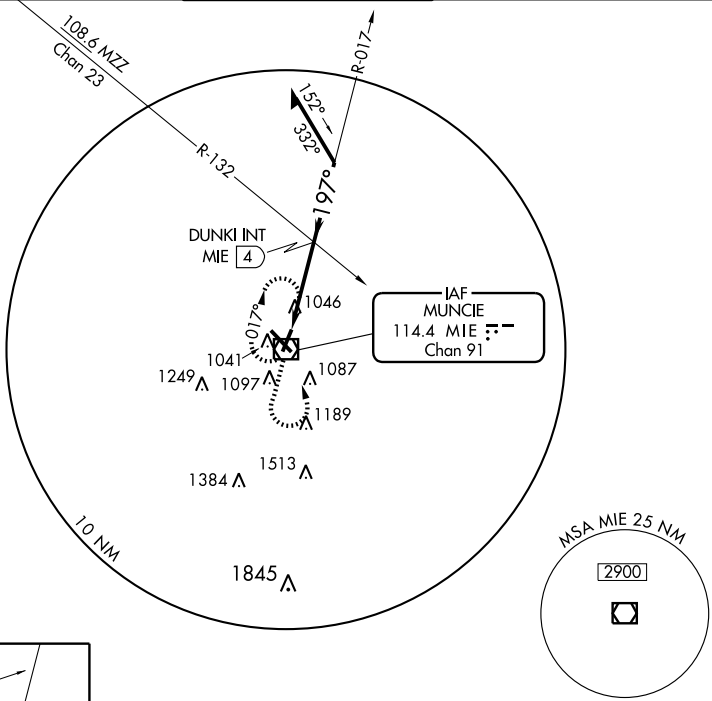
VOR or GPS RWY 20

MUNCIE / DELAWARE COUNTY-JOHNSON FIELD (MIE)

▼ When control tower closed, except for operators with approved weather reporting service, use Fort Wayne altimeter setting and increase all MDAs 120 feet and CATs C and D visibilities ½ mile.
▲

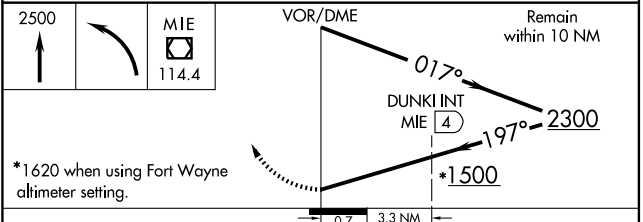
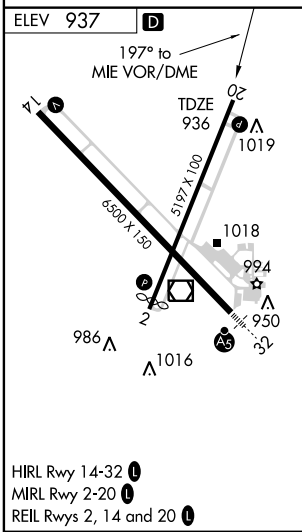
MISSED APPROACH: Climb to 2500 then left turn direct MIE VOR/DME and hold.

ATIS 133.25	INDIANAPOLIS CENTER 120.65 317.8	MUNCIE TOWER ★ 120.1(CTAF) 379.8	GND CON 121.9	UNICOM 122.95
-----------------------	--	--	-------------------------	-------------------------



EC-2, 22 OCT 2009 to 19 NOV 2009

EC-2, 22 OCT 2009 to 19 NOV 2009



CATEGORY	A	B	C	D
S-20	1500-1	564 (600-1)	1500-1½ 564 (600-1½)	1500-1¾ 564 (600-1¾)
CIRCLING	1500-1	563 (600-1)	1500-1½ 563 (600-1½)	1520-2 583 (600-2)
DUNKIN' INT/4 DME MINIMUMS				
S-20	1440-1	504 (600-1)	1440-1½	504 (600-1½)
CIRCLING	1440-1	503 (600-1)	1440-1½ 503 (600-1½)	1520-2 583 (600-2)

MUNCIE, INDIANA
Amdt 13 09295

MUNCIE / DELAWARE COUNTY-JOHNSON FIELD (MIE)
40°15'N - 85°24'W
VOR or GPS RWY 20