

MUNCIE, INDIANA

AL-5011 (FAA)

VOR RWY 32

MUNCIE / DELAWARE COUNTY-JOHNSON FIELD (MIE)

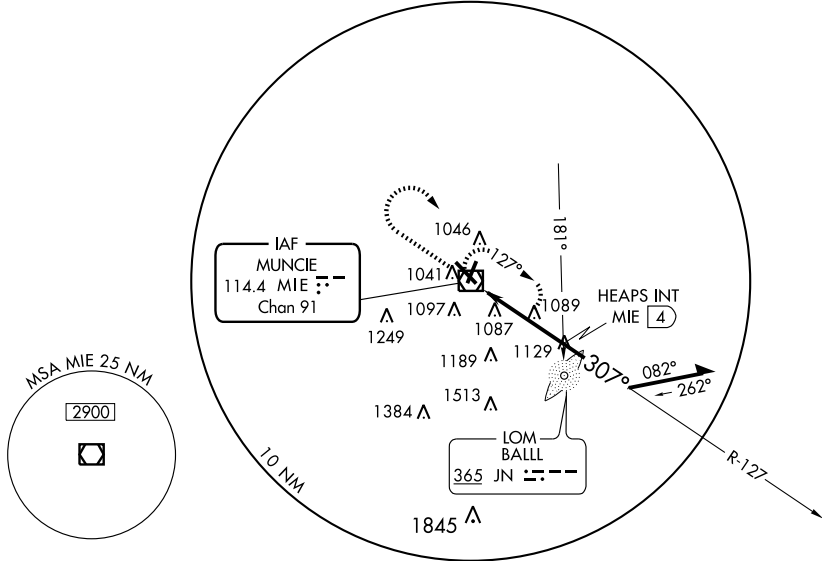
VOR/DME MIE 114.4 Chan 91	APP CRS 307°	Rwy Idg TDZE 937 Apt Elev 937	6500 937 937
---	------------------------	---	---

⚠ If local altimeter setting not received, use Fort Wayne Intl altimeter setting and increase all MDAs 140 feet. Inoperative table does not apply to Cats C and D. For inoperative MALSR, increase S-32 Cats A and B visibility to 1 mile. DME or ADF REQUIRED.



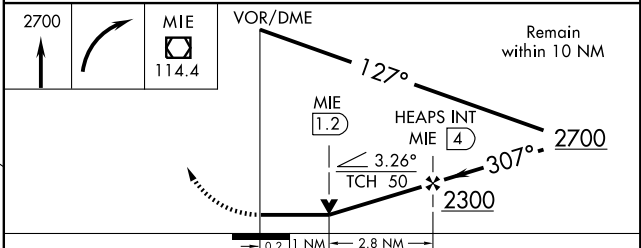
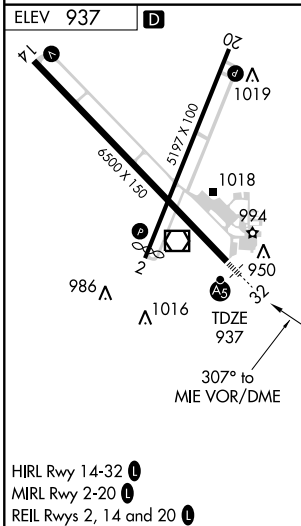
MISSED APPROACH: Climb to 2700 then right turn direct MIE VOR/DME and hold.

ATIS 133.25	INDIANAPOLIS CENTER 120.65 317.8	MUNCIE TOWER ★ 120.1(CTAF) 0 379.8	GND CON 121.9	UNICOM 122.95
-----------------------	--	--	-------------------------	-------------------------



EC-2, 22 OCT 2009 to 19 NOV 2009

EC-2, 22 OCT 2009 to 19 NOV 2009



CATEGORY	A	B	C	D
S-32	1340- ³ / ₄	403 (500- ³ / ₄)	1340-1 ¹ / ₄	403 (500-1 ¹ / ₄)
CIRCLING	1400-1	463 (500-1)	1400-1 ¹ / ₂	1500-2 463 (500-1 ¹ / ₂) 563 (600-2)

MUNCIE, INDIANA
Amdt 15 09295

MUNCIE / DELAWARE COUNTY-JOHNSON FIELD (MIE)
40°15'N - 85°24'W

VOR RWY 32