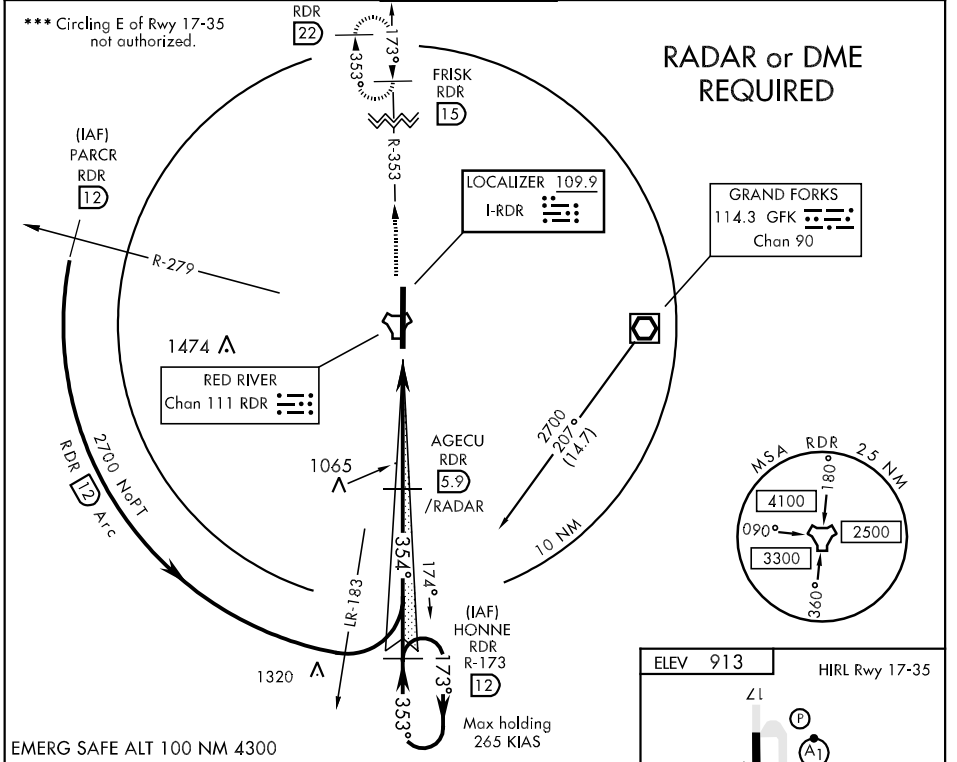
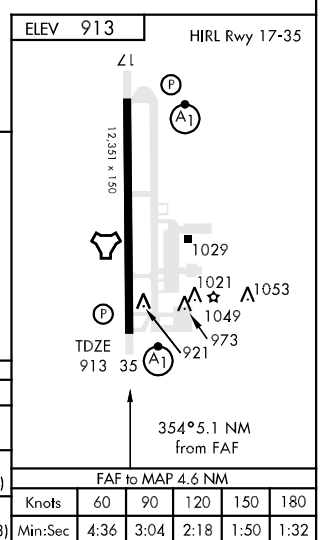
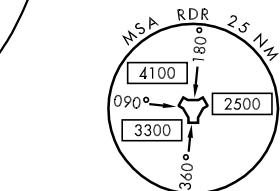
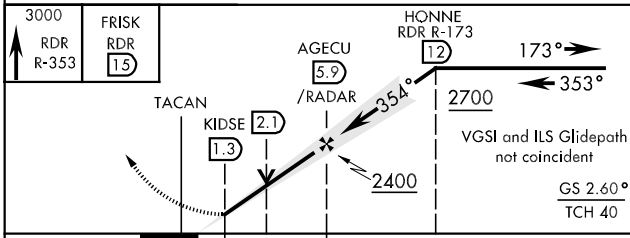


LOC I-RDR 109.9	APCH CRS 354°	Rwy Idg 12,351 TDZE 913 Arpt Elev 913	AL-5010 [USAF]	GRAND FORKS AFB (KRDR)
* When ALS inop, increase RVR to 40 and vis to ¾ mile. ** When ALS inop, increase CAT AB RVR to 50 and vis to 1 mile, CAT CD RVR to 60 and vis to 1¼ miles, CAT E vis to 1½ miles.				ALSF-1 MISSED APPROACH: Climb to 3000 on RDR TACAN R-353 to FRISK and hold.

ATIS ★ 273.45	GRAND FORKS APP CON 118.1 318.1	RED RIVER TOWER 124.9 349.0	GND CON 119.15 275.8	CLNC DEL 119.15 360.7
-------------------------	---	---------------------------------------	--------------------------------	---------------------------------



EMERG SAFE ALT 100 NM 4300



CATEGORY	A	B	C	D	E
S-ILS 35 *	1113/24		200	(200-½)	
S-LOC 35 **	1320/24	407 (500-½)	1320/40	407 (500-¾)	1320/50 407 (500-1)
CIRCLING ***	1340-1 427 (500-1)	1380-1 467 (500-1)	1380-1½ 467 (500-1½)	1480-2 567 (600-2)	2040-3 1127 (1200-3)

NC-1, 22 OCT 2009 to 19 NOV 2009

NC-1, 22 OCT 2009 to 19 NOV 2009