

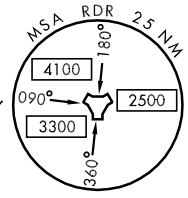
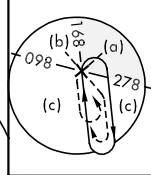
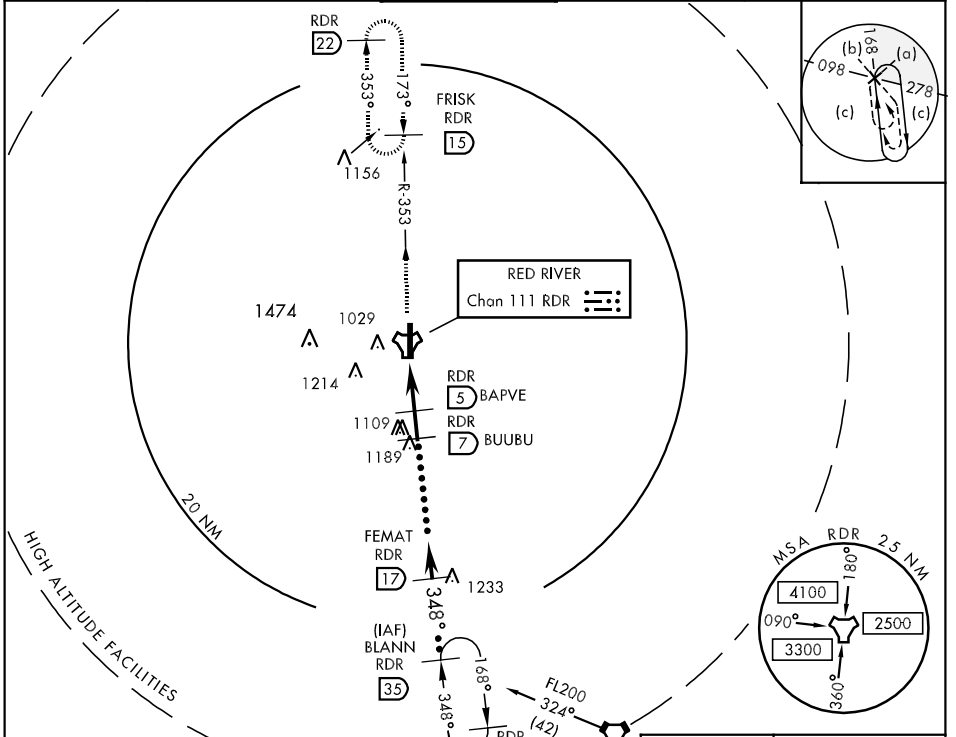
TACAN RDR Chan <b>111</b>	APCH CRS <b>348°</b>	Rwy Idg TDZE Arpt Elev <b>12,351</b> <b>913</b> <b>913</b>	JAL-5010 [USAF]	GRAND FORKS AFB (KRDR)
------------------------------	-------------------------	---	-----------------	------------------------

\* When ALS inop, increase CAT CD RVR to 60 and vis to 1½ miles, CAT E vis to 1½ miles.  
 \*\* Circling E of Rwy 17-35 not authorized.



MISSED APPROACH: Climb to 3000 on RDR TACAN R-353 to FRISK and hold.

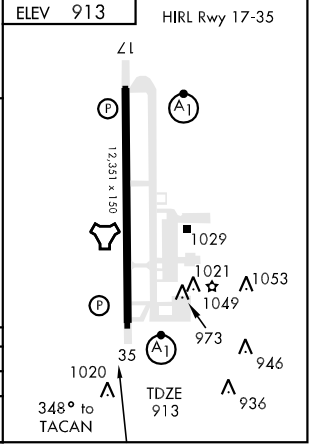
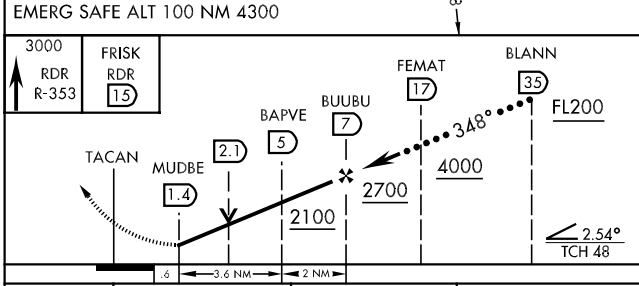
ATIS ★ <b>273.45</b>	GRAND FORKS APP CON <b>118.1 318.1</b>	RED RIVER TOWER <b>124.9 349.0</b>	GND CON <b>119.15 275.8</b>	CLNC DEL <b>119.15 360.7</b>
-------------------------	---	---------------------------------------	--------------------------------	---------------------------------



NC-1, 22 OCT 2009 to 19 NOV 2009

NC-1, 22 OCT 2009 to 19 NOV 2009

ELEV <b>913</b>	HIRL Rwy 17-35
-----------------	----------------



CATEGORY	C	D	E
S-35 *	1320/40 407 (500-¾)	1320/50 407 (500-1)	
CIRCLING **	1380-1½ 467 (500-1½)	1480-2 567 (600-2)	2040-3 1127 (1200-3)