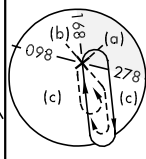
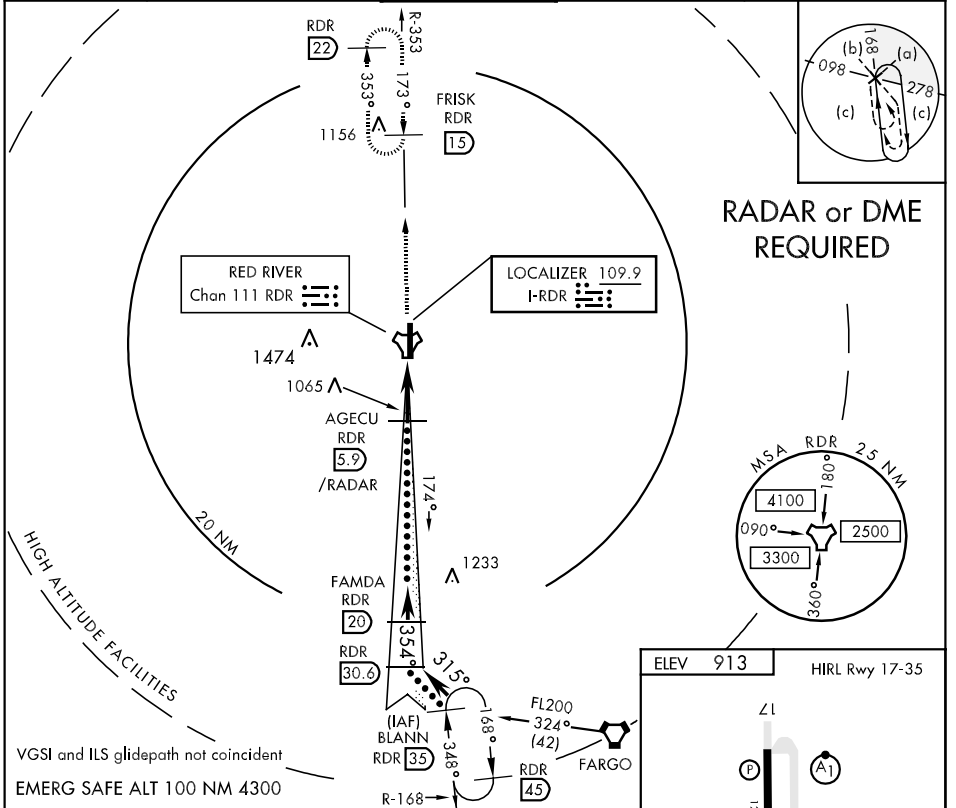


LOC I-RDR 109.9	APCH CRS 354°	Rwy Idg TDZE Arpt Elev 12,351 913 913	JAL-5010 [USAF]	GRAND FORKS AFB (KRDR)
---------------------------	-------------------------	---	-----------------	------------------------

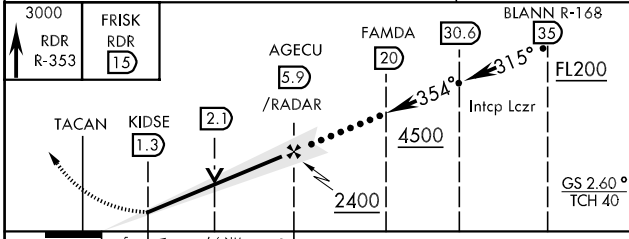
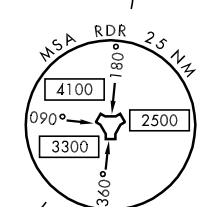
* When ALS inop, increase CAT CDE RVR to 40 and vis to ¾ mile.
 ** When ALS inop, incr CAT CD RVR to 60 and vis to 1¼ mile, CAT E vis to 1½.
 *** Circling E of Rwy 17-35 not authorized.

ALSF-1 MISSED APPROACH: Climb to 3000 on RDR TACAN R-353 to FRISK and hold.

ATIS ★ 273.45	GRAND FORKS APP CON 118.1 318.1	RED RIVER TOWER 124.9 349.0	GND CON 119.15 275.8	CLNC DEL 119.15 360.7
-------------------------	---	---------------------------------------	--------------------------------	---------------------------------



RADAR or DME REQUIRED



ELEV 913	HIRL Rwy 17-35
----------	----------------

FAF to MAP 4.6 NM					
Knots	120	140	160	180	200
Min:Sec	2:18	1:58	1:43	1:32	1:23

CATEGORY	C	D	E
S-ILS 35*	1113/24	200	(200-½)
S-LOC 35**	1320/40	407 (500-¾)	1320/50 407 (500-1)
CIRCLING***	1380-1½ 467 (500-1½)	1480-2 567 (600-2)	2040-3 1127 (1200-3)

NC-1, 22 OCT 2009 to 19 NOV 2009

NC-1, 22 OCT 2009 to 19 NOV 2009