

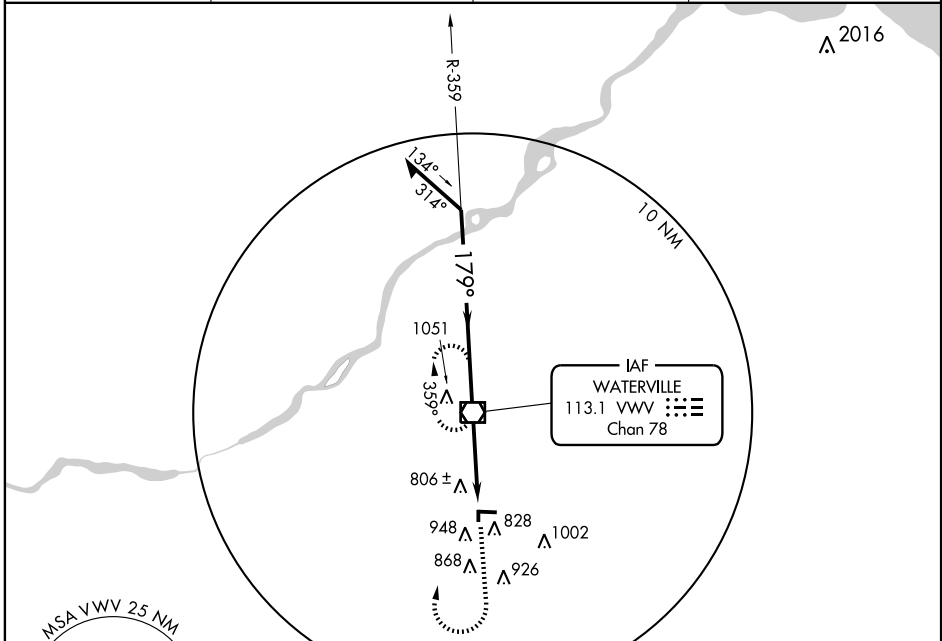
VOR RWY 18

BOWLING GREEN / WOOD COUNTY (1G4)

VOR/DME VVWV 113.1 Chan 78	APP CRS 179°	Rwy Idg 2628 TDZE 672 Apt Elev 673
--	------------------------	---

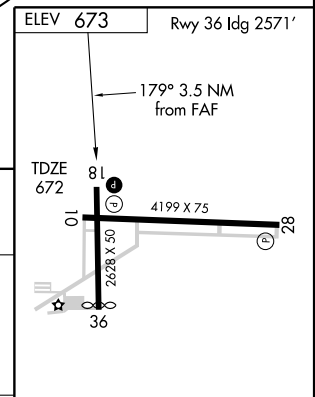
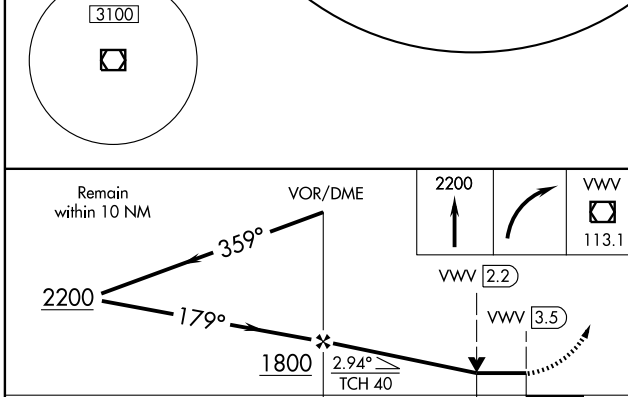
<p>▼ If local altimeter setting not received, use Toledo Express altimeter setting and increase all MDAs 40 feet.</p> <p>▲ NA</p>	<p>MISSED APPROACH: Climb to 2200 then right turn direct VVW VOR/DME and hold.</p>
---	--

AWOS-3 120.725	TOLEDO APP CON 126.1 317.55	CLNC DEL 125.6	UNICOM 122.8 (CTAF)
--------------------------	---------------------------------------	--------------------------	-------------------------------



EC-2, 22 OCT 2009 to 19 NOV 2009

EC-2, 22 OCT 2009 to 19 NOV 2009



CATEGORY	A	B	C	D
S-18	1120-1	448 (500-1)		NA
CIRCLING	1300-1	627 (700-1)		NA

REIL Rwy 10, 18 and 28				
MIRL Rwy 10-28 and 18-36				
FAF to MAP 3.5 NM				
Knots	60	90	120	150
Min:Sec	3:30	2:20	1:45	1:24
				1:10

VOR RWY 18