

BOWLING GREEN, OHIO

AL-5009 (FAA)

WAAS CH <b>97403</b> <b>W18A</b>	APP CRS <b>184°</b>	Rwy Idg <b>2628</b> TDZE <b>672</b> Apt Elev <b>673</b>
--	------------------------	---

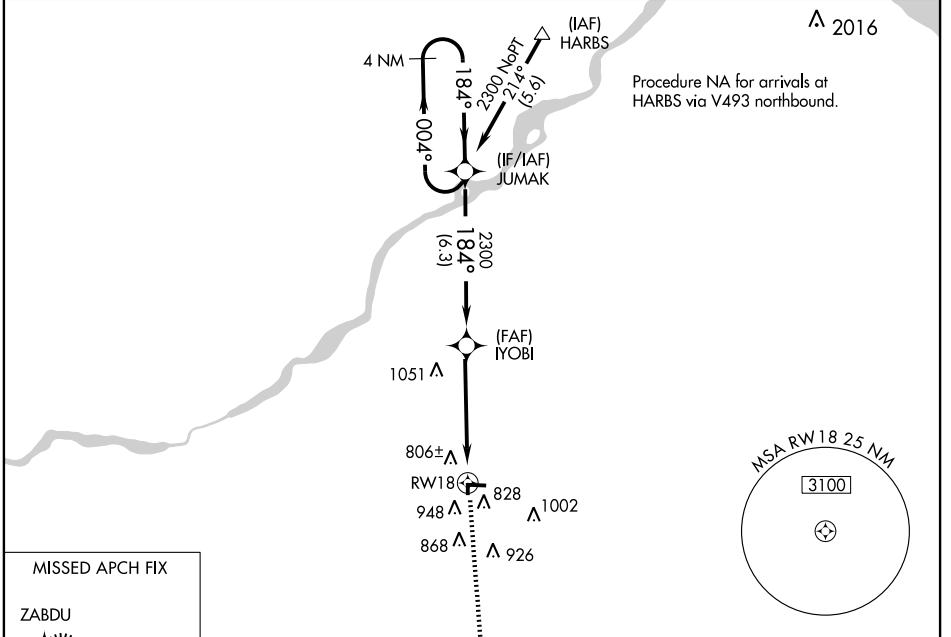
# RNAV (GPS) RWY 18

BOWLING GREEN / WOOD COUNTY (1G4)

**▼** If local altimeter setting not received, use Toledo Express altimeter setting and increase all DAs 35 feet and all MDAs 40 feet. DME/DME RNP-0.3 NA.

**▲ NA** MISSED APPROACH: Climb to 2400 direct ZABDU and hold.

AWOS-3 <b>120.725</b>	TOLEDO APP CON <b>126.1 317.55</b>	CLNC DEL <b>125.6</b>	UNICOM <b>122.8 (CTAF)</b>
--------------------------	---------------------------------------	--------------------------	-------------------------------

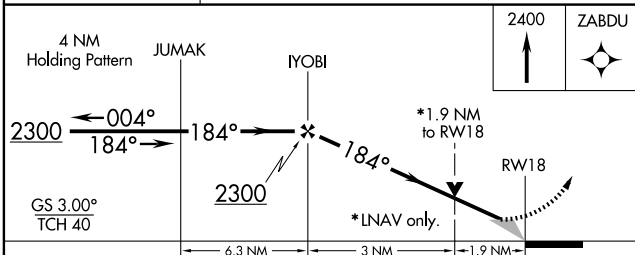


EC-2, 22 OCT 2009 to 19 NOV 2009

EC-2, 22 OCT 2009 to 19 NOV 2009

MISSED APCH FIX

ZABDU



CATEGORY	A	B	C	D
LPV DA	922-1	250 (300-1)		NA
LNAV MDA	1320-1	648 (700-1)		NA
CIRCLING	1320-1	647 (700-1)		NA

ELEV 673 Rwy 36 Idg 2571'

REIL Rwy 10, 18 and 28

MIRL Rwy 10-28 and 18-36

BOWLING GREEN, OHIO  
Orig-A 09239

41°23'N - 83°38'W

# BOWLING GREEN / WOOD COUNTY (1G4)

## RNAV (GPS) RWY 18