

VOR/DME COY	APP CRS	Rwy ldg	9000
108.2	259°	TDZE	43
Chan 19		Apt Elev	65

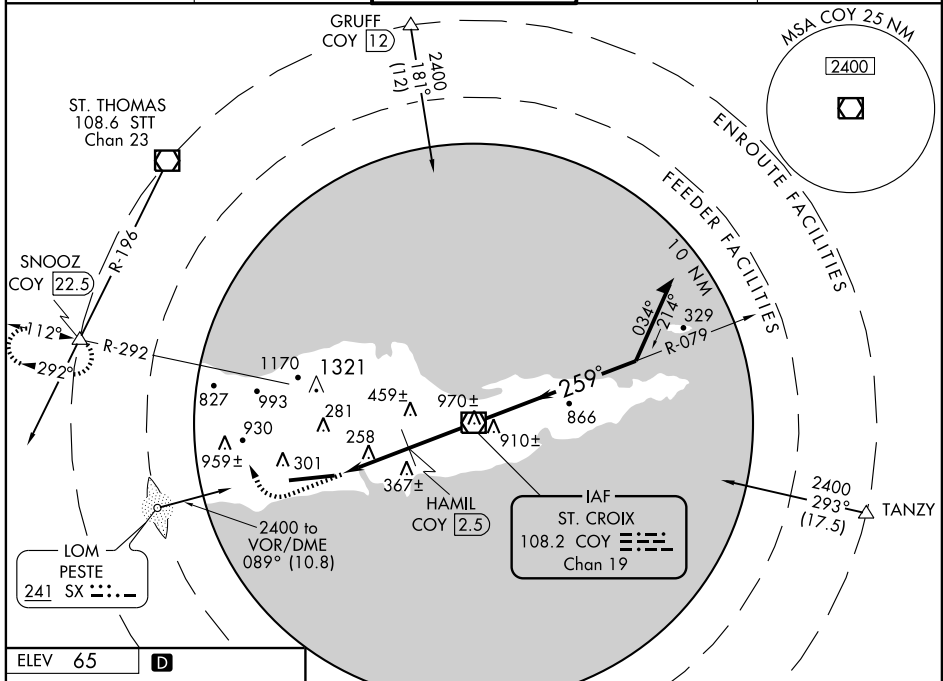
VOR RWY 28

CHRISTIANSTED, ST. CROIX/HENRY E. ROHLSSEN (STX) (TISX)

Procedure not authorized when control tower closed.
Circle NA North of Rwy 10-28.

MISSED APPROACH: Climb to 2000 then climbing right turn to 2400 via heading 330° and COY R-292 to SNOOZ Int/COY 22.5 DME and hold.

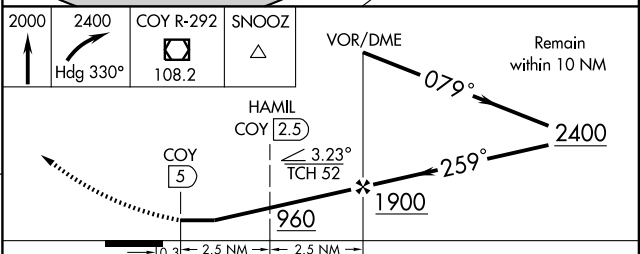
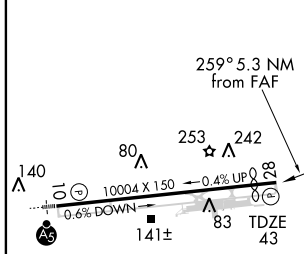
ATIS 135.65	SAN JUAN CENTER 128.65 279.6	ST. CROIX TOWER ★ 118.6 (CTAF) 239.3	GND CON 121.7	UNICOM 123.0
-----------------------	--	--	-------------------------	------------------------



SE-3, 22 OCT 2009 to 19 NOV 2009

SE-3, 22 OCT 2009 to 19 NOV 2009

ELEV 65	D
---------	----------



REIL Rwy 28
 HIRL Rwy 10-28

FAF to MAP 5 NM

Knots	60	90	120	150	180
Min:Sec	5:00	3:20	2:30	2:00	1:40

CATEGORY	A	B	C	D
S-28	960-1¼	917 (900-1¼)	960-2¾ 917 (900-2¾)	960-3 917 (900-3)
CIRCLING	960-1¼	895 (900-1¼)	960-2¾ 895 (900-2¾)	960-3 895 (900-3)
HAMIL FIX MINIMUMS				
S-28	640-1	597 (600-1)	640-1½ 597 (600-1½)	640-1¾ 597 (600-1¾)
CIRCLING	640-1	575 (600-1)	640-1½ 575 (600-1½)	680-2 615 (700-2)

VOR RWY 28