

VOR RWY 21

FRANKLIN/ VENANGO RGNL (F'KL)

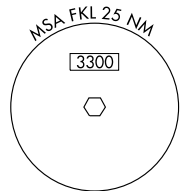
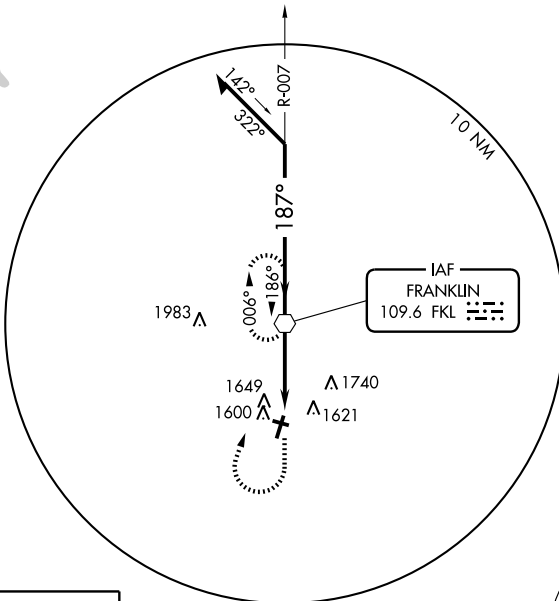
VOR FKL 109.6	APP CRS 187°	Rwy ldg 5200
		TDZE 1540
		Apt Elev 1540

⚠ If local altimeter setting not received, use Port Meadville altimeter setting and increase all MDA's 80 feet.
⚠ Inoperative table does not apply.



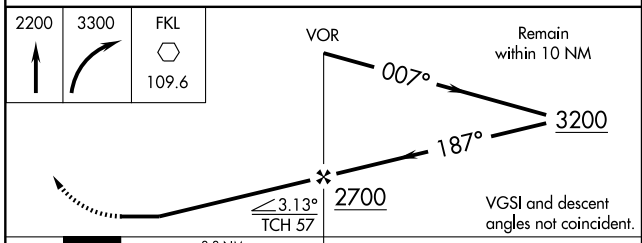
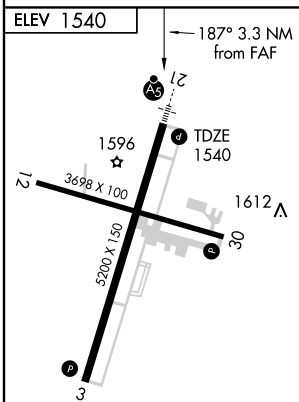
MISSED APPROACH: Climb to 2200, then climbing right turn to 3300 direct FKL VOR and hold.

AWOS-3 118.175	YOUNGSTOWN APP CON ★ 126.25 322.3	CLNC DEL 126.25	UNICOM 122.7 (CTAF) Ⓛ
--------------------------	---	---------------------------	--



NE-4, 22 OCT 2009 to 19 NOV 2009

NE-4, 22 OCT 2009 to 19 NOV 2009



FAF to MAP 3.3 NM					
Knots	60	90	120	150	180
Min:Sec	3:18	2:12	1:39	1:19	1:06
CATEGORY	A	B	C	D	
S-21	1900-1 360 (400-1)			1900-1¼ 360 (400-1¼)	
CIRCLING	1960-1 420 (500-1)	2000-1 460 (500-1)	2000-1½ 460 (500-1½)	2100-2 560 (600-2)	