


# RNAV (GPS) RWY 21


FRANKLIN/ VENANGO RGNL (FKL)

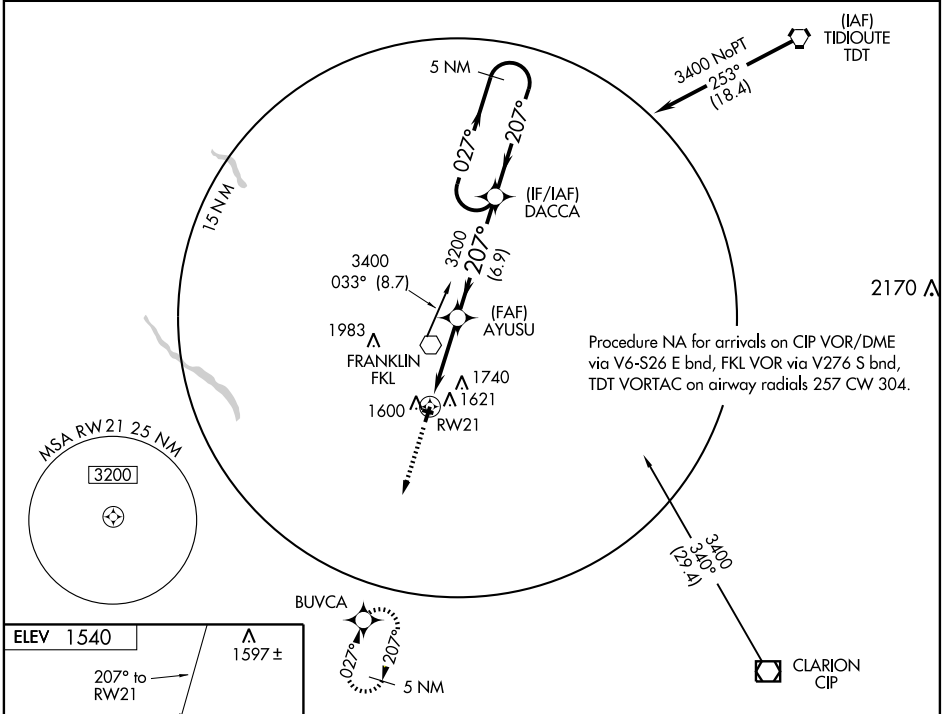
WAAS CH <b>77501</b> W21A	APP CRS <b>207°</b>	Rwy Idg TDZE Apt Elev	<b>5200</b> <b>1539</b> <b>1540</b>
---------------------------------	------------------------	-----------------------------	---

**⚠** DME/DME RNP-0.3 NA. For uncompensated Baro-VNAV systems, LNAV/VNAV NA below -18°C (0°F) or above 45°C (114°F). For inoperative MALSR, increase LPV all cats visibility to 1 and LNAV Cat D visibility to 1¼. If local altimeter setting not received, use Port Meadville altimeter setting and increase all DAs/MDAs 80 feet. VDP and Baro-VNAV NA when using Port Meadville altimeter setting.

**MALSR** 

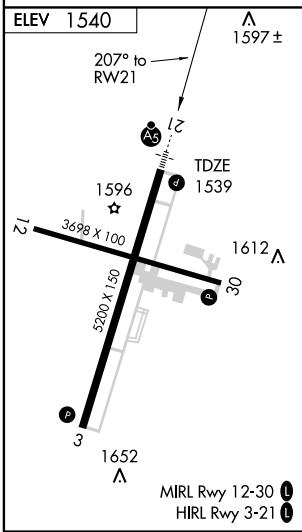
**MISSED APPROACH:** Climb to 3400 direct BUVCA and hold.

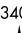


AWOS-3 <b>118.175</b>	YOUNGSTOWN APP CON ★ <b>126.25 322.3</b>	CLNC DEL <b>126.25</b>	UNICOM <b>122.7 (CTAF)</b> 
--------------------------	---	---------------------------	---



NE-4, 22 OCT 2009 to 19 NOV 2009

NE-4, 22 OCT 2009 to 19 NOV 2009



3400	BUVCA	VGSI and RNAV glidepath not coincident.	DACCA	5 NM Holding Pattern
				
		AYUSU		
		* 1 NM TO RWY 21		
		RWY 21		
		* LNAV only		
		1 NM	4 NM	6.9 NM
				3400
				GS 3.00° TCH 55
CATEGORY	A	B	C	D
LPV DA		1803-½	263 (300-½)	
LNAV/VNAV DA		1901-¾	361 (400-¾)	
LNAV MDA		1900-½	360 (400-½)	1900-1 360 (400-1)
CIRCLING	1960-1¼ 420 (500-1¼)	2000-1¼ 460 (500-1¼)	2000-1½ 460 (500-1½)	2100-2 560 (600-2)