

RNAV (GPS) RWY 36

MORRIS MUNI-JAMES R. WASHBURN FIELD (C09)

APP CRS	Rwy Idg	5000
357°	TDZE	570
	Apt Elev	584

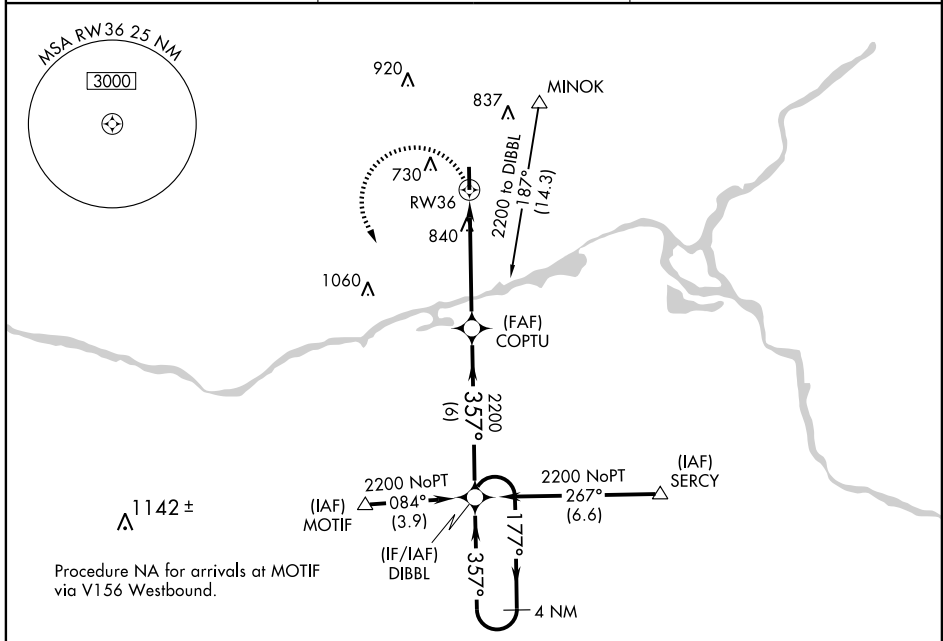
⚠ When local altimeter setting not received, use Joliet altimeter setting and increase all MDA 40 feet, and increase LNAV Cat. C visibility ¼ mile.
⚠ Visibility reduction by helicopters NA. DME/DME RNP-0.3 NA.

MISSED APPROACH: Climbing left turn to 2200 direct DIBBL and hold.

AWOS-3
118.175

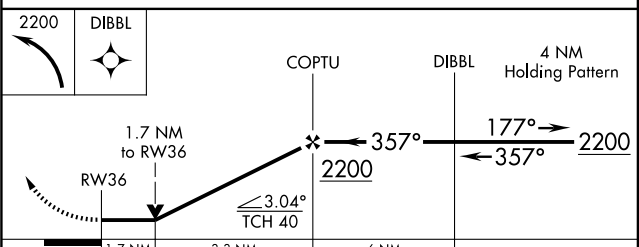
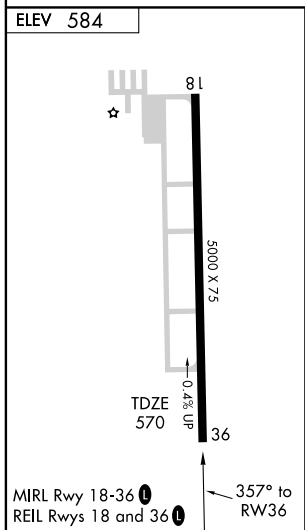
CHICAGO APP CON
119.35 388.0

UNICOM
122.8 (CTAF) 0



EC-3, 22 OCT 2009 to 19 NOV 2009

EC-3, 22 OCT 2009 to 19 NOV 2009



CATEGORY	A	B	C	D
LNAV MDA	1140-1	570 (600-1)	1140-1½ 570 (600-1½)	NA
CIRCLING	1140-1 556 (600-1)	1200-1 616 (700-1)	1200-1¾ 616 (700-1¾)	NA