

MORRIS, ILLINOIS

AL-5004 (FAA)

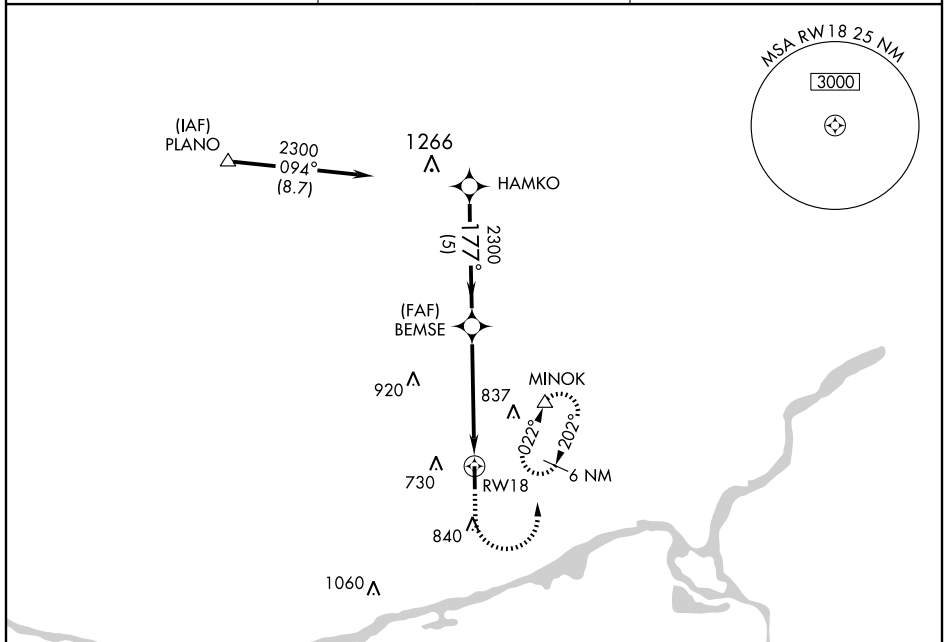
# RNAV (GPS) RWY 18

MORRIS MUNI-JAMES R. WASHBURN FIELD (C09)

APP CRS	Rwy Idg	<b>5000</b>
<b>177°</b>	TDZE	<b>584</b>
	Apt Elev	<b>584</b>

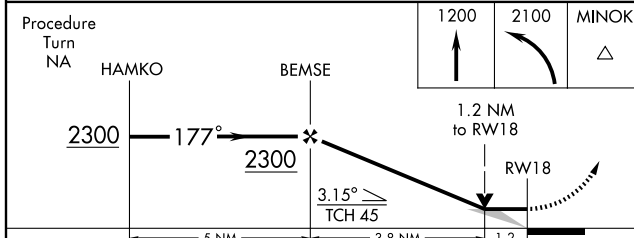
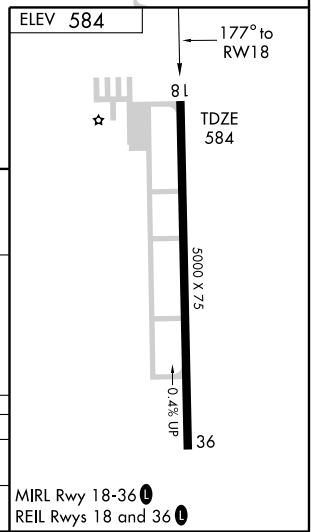
<b>▲</b> NA	GPS or RNP-0.3 Required. DME/DME RNP-0.3 NA	MISSED APPROACH: Climb to 1200 then climbing left turn to 2100 direct MINOK WP and hold.
-------------	--	--

AWOS-3 <b>118.175</b>	CHICAGO APP CON <b>119.35 388.0</b>	UNICOM <b>122.8 (CTAF) 0</b>
--------------------------	--	---------------------------------



EC-3, 22 OCT 2009 to 19 NOV 2009

EC-3, 22 OCT 2009 to 19 NOV 2009



CATEGORY	A	B	C	D
LNNAV MDA	1020-1	436 (500-1)	1020-1¼ 436 (500-1¼)	NA
CIRCLING	1080-1	496 (500-1)	1200-1¾ 616 (700-1¾)	NA

MIRL Rwy 18-36 0  
REIL Rwy 18 and 36 0

MORRIS, ILLINOIS  
Orig 08325

MORRIS MUNI-JAMES R. WASHBURN FIELD (C09)  
41° 26' N - 88° 25' W  
**RNAV (GPS) RWY 18**