

ROGERS, ARKANSAS

AL-5002 (FAA)

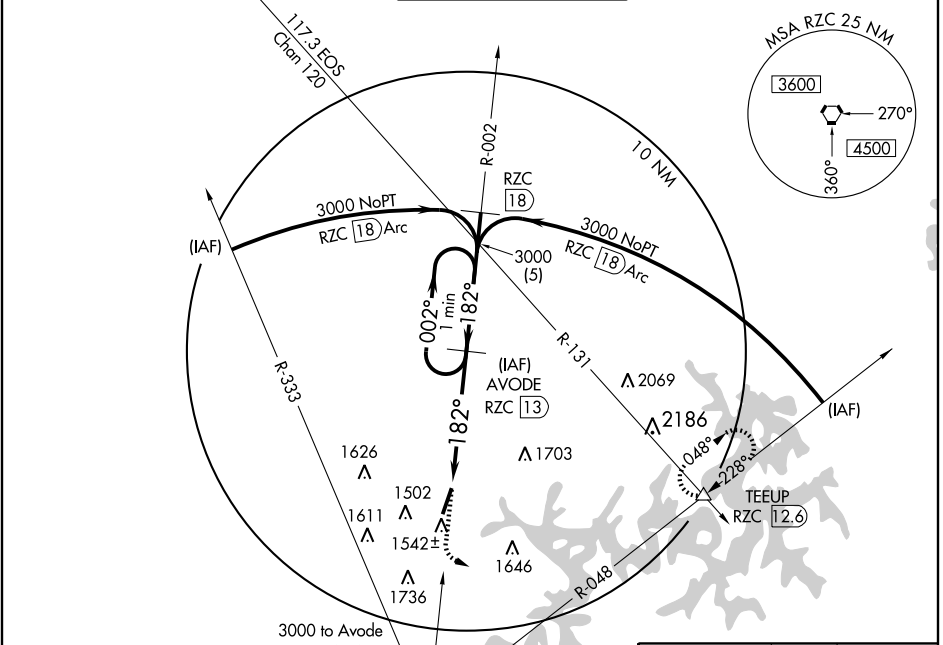
VORTAC RZC <b>116.4</b> Chan 111	APP CRS <b>182°</b>	Rwy Idg TDZE Apt Elev	<b>6011</b> <b>1353</b> <b>1358</b>
--	------------------------	-----------------------------	---

# VOR/DME RWY 20

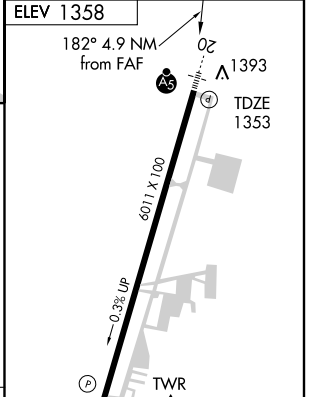
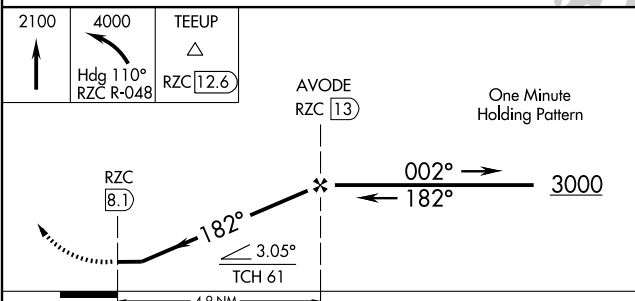
ROGERS MUNI-CARTER FIELD (ROG)

Inoperative components table NA.	MALSR 	MISSED APPROACH: Climb to 2100, then climbing left turn to 4000 via heading 110° and RZC R-048 to TEEUP Int and hold.
----------------------------------	-----------	---

AWOS-3 <b>134.375</b>	RAZORBACK APP CON* <b>126.6 305.2</b>	ROGERS TOWER* <b>119.375</b> (CTAF)	GND CON <b>118.0</b>	CLNC DEL <b>121.75</b>
--------------------------	--	--	-------------------------	---------------------------



RAZORBACK  
116.4 RZC  
Chan 111



CATEGORY	A	B	C	D
S-20	1740-1	387 (400-1)		1740-1¼ 387 (400-1¼)
CIRCLING	1780-1 422 (500-1)	1820-1 462 (500-1)	1820-1½ 462 (500-1½)	1920-2 562 (600-2)

Knots	60	90	120	150	180
Min:Sec					

ROGERS, ARKANSAS  
Amdt 10B 07130

36°22'N - 94°06'W

ROGERS MUNI-CARTER FIELD (ROG)  
VOR/DME RWY 20

SC-1, 22 OCT 2009 to 19 NOV 2009

SC-1, 22 OCT 2009 to 19 NOV 2009