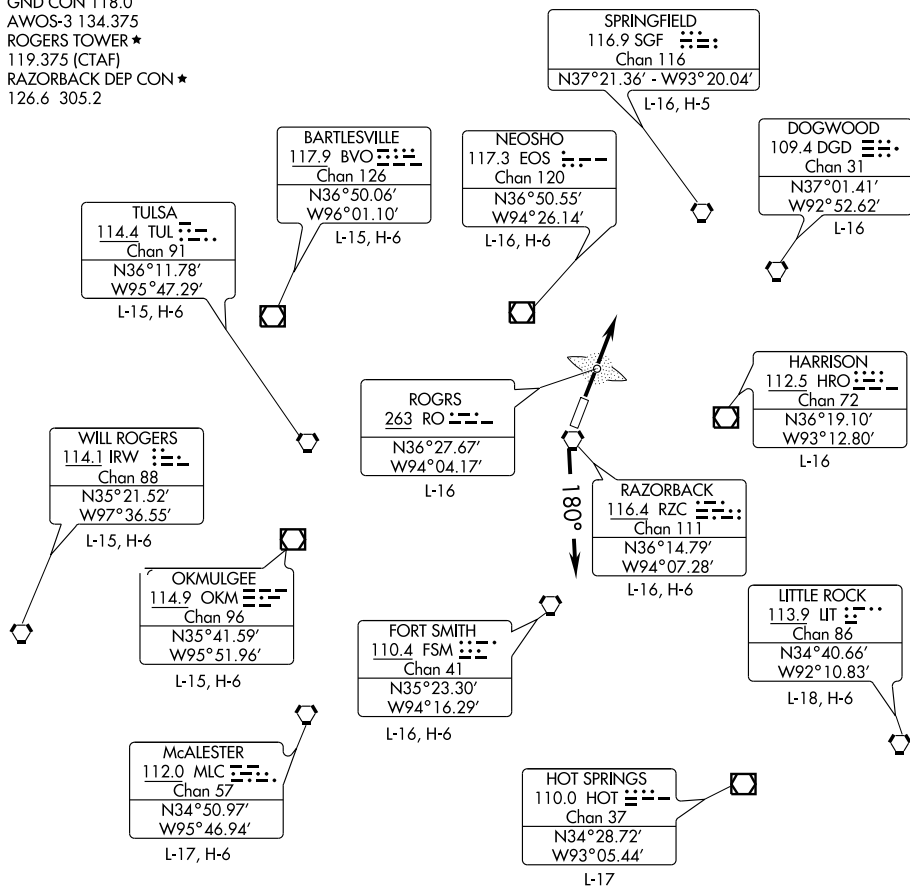


CLNC DEL 121.75
GND CON 118.0
AWOS-3 134.375
ROGERS TOWER ★
119.375 (CTAF)
RAZORBACK DEP CON ★
126.6 305.2



SC-1, 22 OCT 2009 to 19 NOV 2009

SC-1, 22 OCT 2009 to 19 NOV 2009

Note: Chart not to scale

DEPARTURE ROUTE DESCRIPTION

All aircraft cleared as filed.

TAKE-OFF RUNWAY 2: Fly runway heading. Thence. . .

TAKE-OFF RUNWAY 20: Turn left heading 180°. Thence. . .

. . . Expect radar vectors to filed/assigned route. Climb and maintain 3000 feet.

Expect clearance to filed altitude/flight level ten minutes after departure.

LOST COMMUNICATIONS: If communications are not established within 2 minutes after departure, climb and maintain 5000 feet and proceed direct RO LOM, then proceed on course.