

# RNAV (GPS) RWY 20

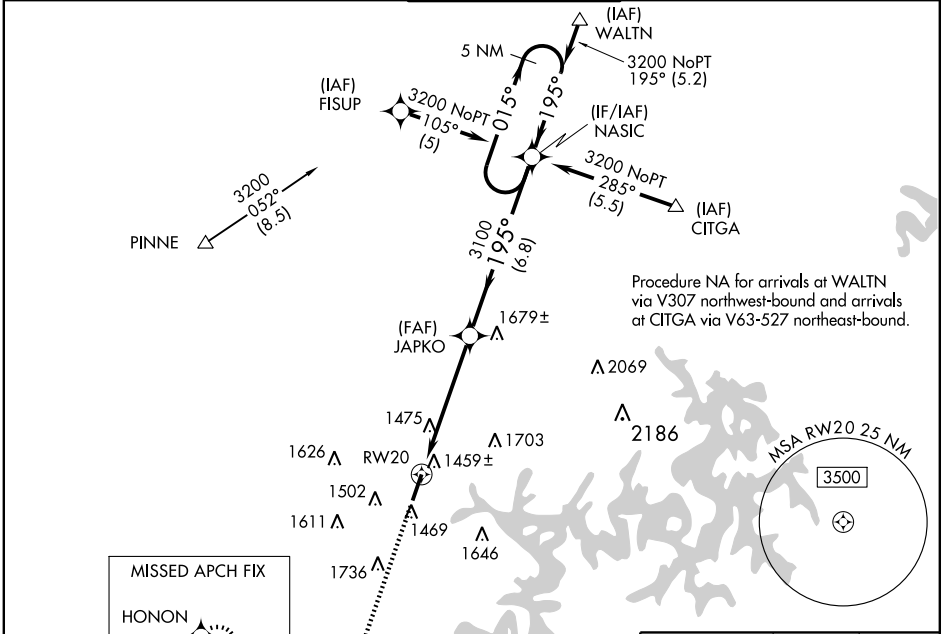
ROGERS MUNI-CARTER FIELD (ROG)

WAAS CH <b>40003</b> <b>W20A</b>	APP CRS <b>195°</b>	Rwy ldg <b>6011</b> TDZE <b>1353</b> Apt Elev <b>1358</b>
--	------------------------	---

**▼** For inoperative MALSR, increase LNAV Cat D to 1¼. For uncompensated BARO-VNAV systems, LNAV/VNAV NA below -17°C (2°F) or above 46°C (114°F). DME/DME RNP-0.3 NA. If local altimeter setting not received, use Bentonville Muni altimeter setting and increase all DAs 22 feet and all MDAs 40 feet. BARO-VNAV and VDP NA when using Bentonville Muni altimeter setting.

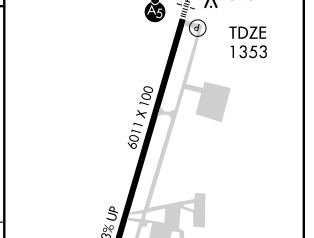
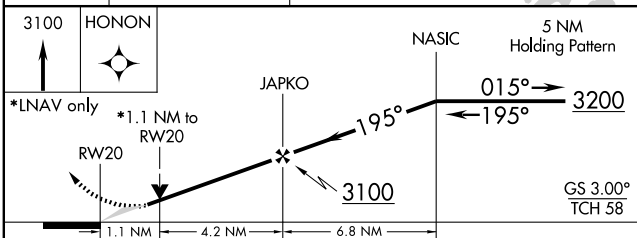
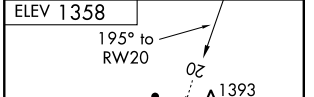
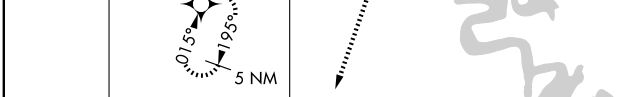
**MALSR** MISSED APPROACH: Climb to 3100 direct HONON and hold.

AWOS-3 <b>134.375</b>	RAZORBACK APP CON* <b>126.6 305.2</b>	ROGERS TOWER* <b>119.375 (CTAF) 0</b>	GND CON <b>118.0</b>	CLNC DEL <b>121.75</b>
--------------------------	--	--	-------------------------	---------------------------



SC-1, 22 OCT 2009 to 19 NOV 2009

SC-1, 22 OCT 2009 to 19 NOV 2009



CATEGORY	A	B	C	D
LPV DA	1603-½		250 (300-½)	
LNAV/VNAV DA	1729-¾		376 (400-¾)	
LNAV MDA	1740-½		387 (400-½)	
CIRCLING	1780-1 422 (500-1)	1820-1 462 (500-1)	1820-1½ 462 (500-1½)	1920-2 562 (600-2)

