

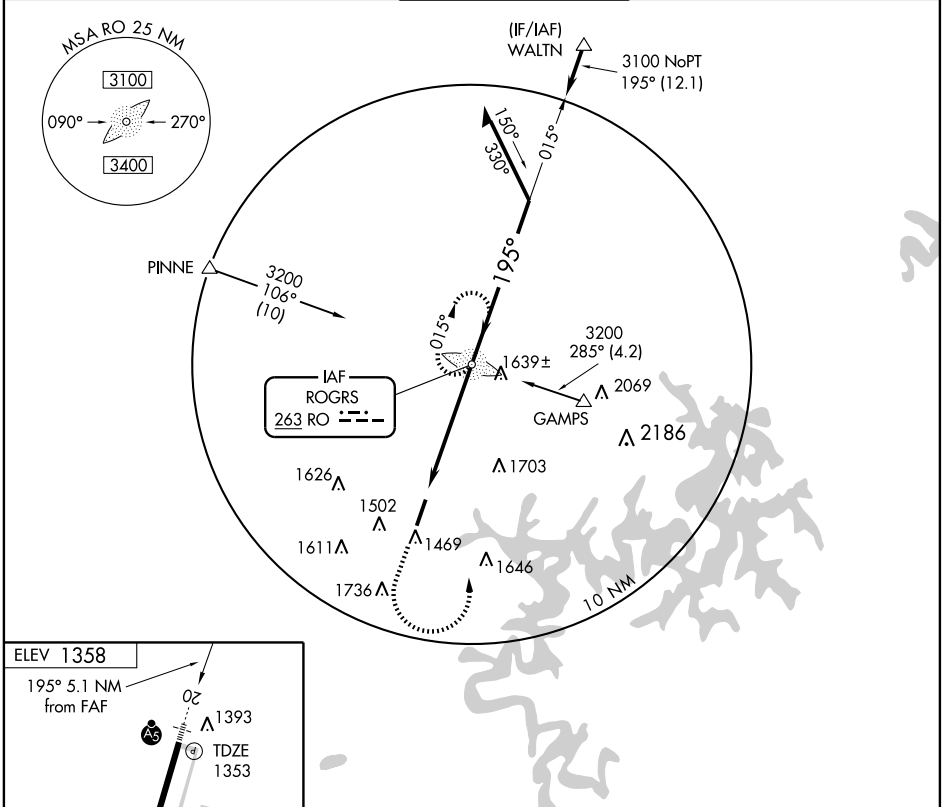
# NDB RWY 20

ROGERS MUNI-CARTER FIELD (ROG)

LOM RO <b>263</b>	APP CRS <b>195°</b>	Rwy Idg 6011	TDZE 1353
		Apt Elev 1358	

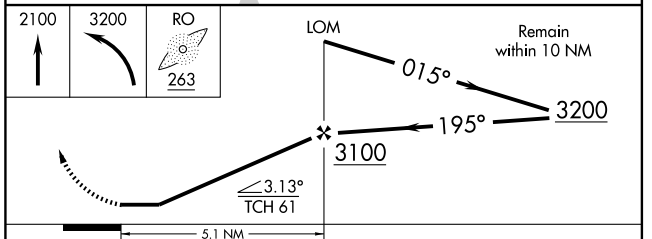
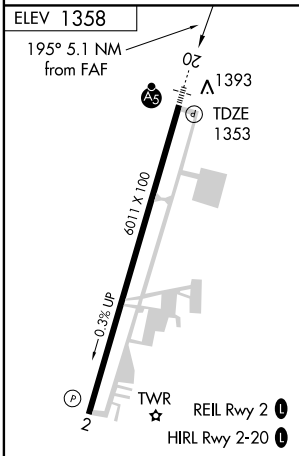
NA	MALSR	MISSED APPROACH: Climb to 2100, then climbing left turn to 3200 direct RO LOM and hold.		
----	-------	---	--	--

AWOS-3 <b>134.375</b>	RAZORBACK APP CON* <b>126.6 305.2</b>	ROGERS TOWER* <b>119.375 (CTAF) 0</b>	GND CON <b>118.0</b>	CLNC DEL <b>121.75</b>
--------------------------	--	--	-------------------------	---------------------------



SC-1, 22 OCT 2009 to 19 NOV 2009

SC-1, 22 OCT 2009 to 19 NOV 2009



FAF to MAP 5.1 NM					
Knots	60	90	120	150	180
Min:Sec	5:06	3:24	2:33	2:02	1:42

CATEGORY	A	B	C	D
S-20	1780- <sup>3</sup> / <sub>4</sub> 427 (500- <sup>3</sup> / <sub>4</sub> )			1780-1 <sup>1</sup> / <sub>4</sub> 427 (500-1 <sup>1</sup> / <sub>4</sub> )
CIRCLING	1780-1 422 (500-1)	1820-1 462 (500-1)	1820-1 <sup>1</sup> / <sub>2</sub> 462 (500-1 <sup>1</sup> / <sub>2</sub> )	1920-2 562 (600-2)