

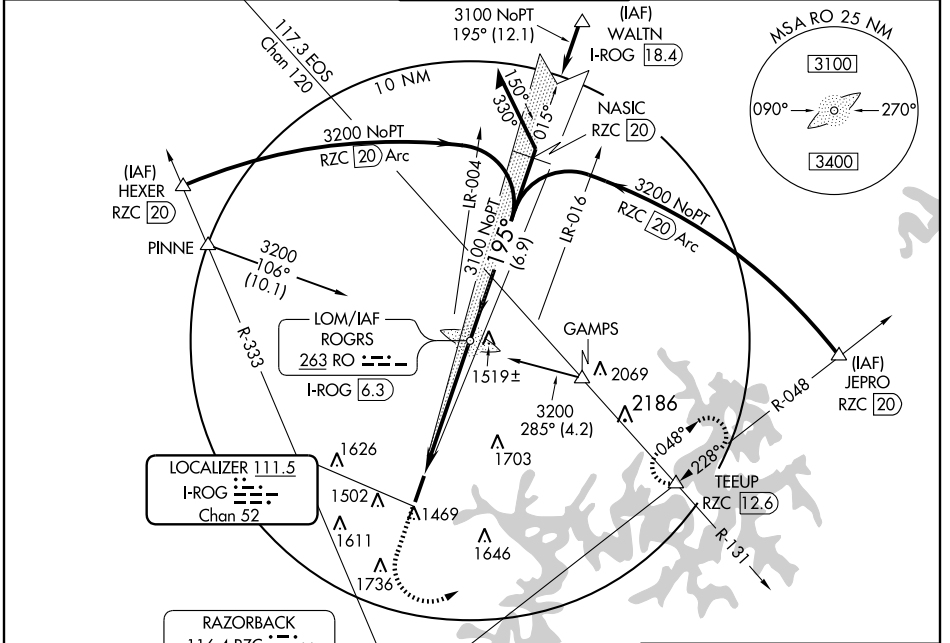
LOC/DME I-ROG 111.5 Chan 52	APP CRS 195°	Rwy Idg 6011 TDZE 1353 Apt Elev 1358
---	------------------------	---

ILS or LOC RWY 20

ROGERS MUNI-CARTER FIELD (ROG)

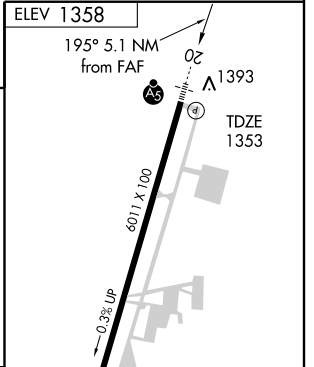
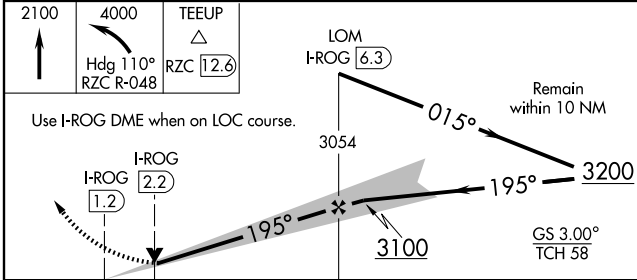
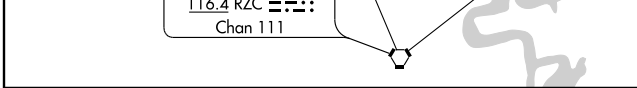
▼ Autopilot coupled approach NA below 1632.	MALSR 	MISSED APPROACH: Climb to 2100, then climbing left turn to 4000 via heading 110° and RZC R-048 to TEEUP Int/ RZC 12.6 DME and hold.
--	-----------	---

AWOS-3 134.375	RAZORBACK APP CON* 126.6 305.2	ROGERS TOWER* 119.375 (CTAF) 0	GND CON 118.0	CLNC DEL 121.75
--------------------------	--	---	-------------------------	---------------------------



SC-1, 22 OCT 2009 to 19 NOV 2009

SC-1, 22 OCT 2009 to 19 NOV 2009



CATEGORY	A	B	C	D
	S-ILS 20	1553-½ 200 (200-½)		
S-LOC 20	1740-½ 387 (400-½)		1740-¾ 387 (400-¾)	
CIRCLING	1780-1 422 (500-1)	1820-1 462 (500-1)	1820-1½ 462 (500-1½)	1920-2 562 (600-2)

FAF to MAP 5.1 NM					
Knots	60	90	120	150	180
Min:Sec	5:06	3:24	2:33	2:02	1:42