

BETHEL, ALASKA

AL-5001 (FAA)

# VOR/DME RWY 1L

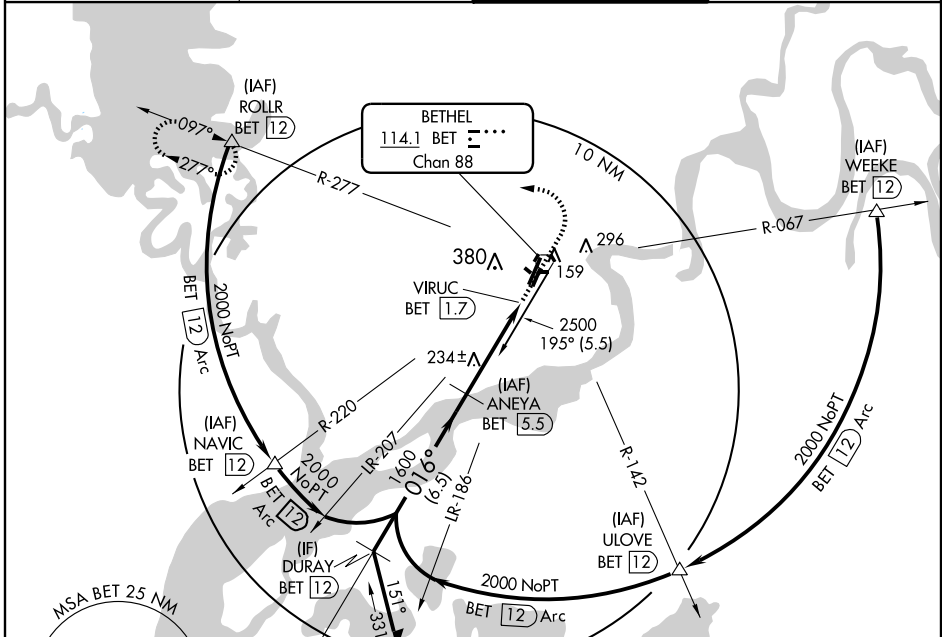
BETHEL (BET)(PABE)

VORTAC BET	APP CRS	Rwy Idg	6400
<b>114.1</b>	<b>016°</b>	TDZE	125
Chan <b>88</b>		Apt Elev	126

⚠ Circling to Rwy 12-30 and 1R-19L NA at night.  
For inoperative MALSR, increase Cat D visibility to RVR 6000.  
Circling NA west of Rwy 1L-19R.

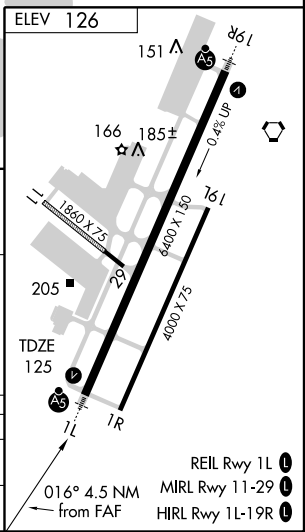
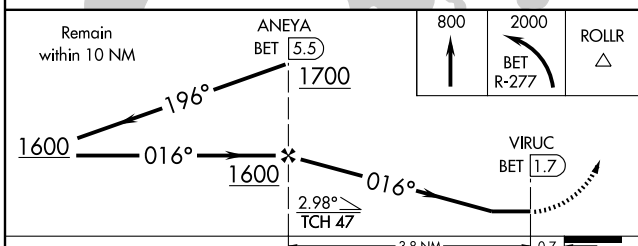
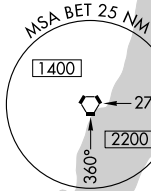
MALSR  
MISSED APPROACH: Climb to 800, then climbing left turn to 2000 via BET VORTAC R-277 to ROLLR/12 DME and hold.

ATIS <b>119.8</b>	ANCHORAGE CENTER <b>125.2 372.0</b>	BETHEL TOWER ★ <b>118.7 (CTAF)</b>	GND CON <b>121.7</b>
----------------------	----------------------------------------	---------------------------------------	-------------------------



AK, 22 OCT 2009 to 17 DEC 2009

AK, 22 OCT 2009 to 17 DEC 2009



CATEGORY	A	B	C	D
S-1L	500/24 375 (400-½)			500/50 375 (400-1)
CIRCLING	520-1 394 (400-1)	580-1 454 (500-1)	600-1½ 474 (500-1½)	680-2 554 (600-2)

BETHEL, ALASKA  
Amdt 2 09295

60°47'N - 161°50'W

# BETHEL (BET)(PABE)

## VOR/DME RWY 1L

- REIL Rwy 1L
- MIRL Rwy 11-29
- HIRL Rwy 1L-19R