

BETHEL, ALASKA

AL-5001 (FAA)

RNAV (GPS) RWY 1L

BETHEL (BET)(PABE)

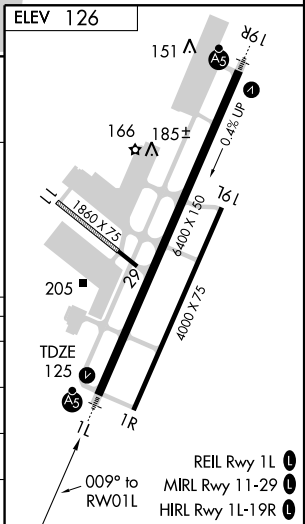
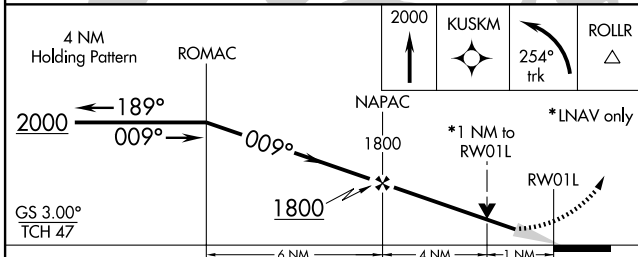
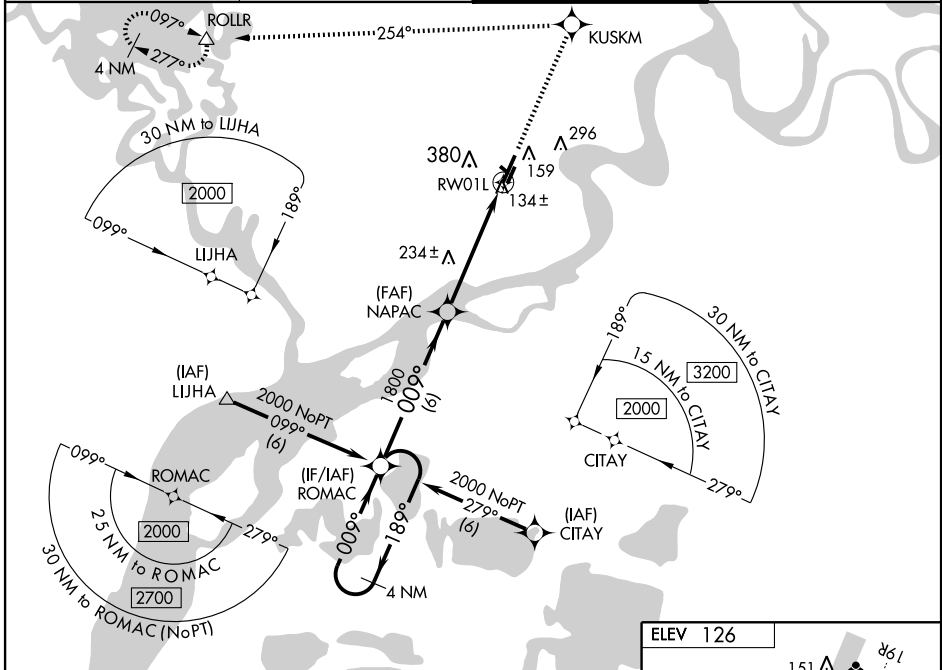
WAAS CH 42707 W01A	APP CRS 009°	Rwy Idg 6400 TDZE 125 Apt Elev 126
---------------------------------	------------------------	---

W Circling to Rwy 12-30 and 1R-19L NA at night.
 For inoperative MALS, increase LNAV Cat D visibility to RVR 6000.
 Circling NA west of Rwy 1L-19R.
 For uncompensated Baro-VNAV systems, LNAV/VNAV NA below -25°C (-13°F) or above 48°C (118°F). DME/DME RNP-0.3 NA.

MALS

MISSED APPROACH: Climb to 2000 direct KUSKM and left turn via 254° track to ROLLR and hold.

ATIS 119.8	ANCHORAGE CENTER 125.2 372.0	BETHEL TOWER * 118.7 (CTAF) 0	GND CON 121.7
----------------------	--	---	-------------------------



CATEGORY	A	B	C	D
LPV DA		375/24	250 (300-½)	
LNAV/VNAV DA		553/50	428 (500-1)	
LNAV MDA		500/24	375 (400-½)	500/50 375 (400-1)
CIRCLING	520-1 394 (400-1)	580-1 454 (500-1)	600-1½ 474 (500-½)	680-2 554 (600-2)

BETHEL, ALASKA
 Amdt 1 09295

60° 47' N-161° 50' W

BETHEL (BET)(PABE)

RNAV (GPS) RWY 1L

AK, 22 OCT 2009 to 17 DEC 2009

AK, 22 OCT 2009 to 17 DEC 2009