

BETHEL, ALASKA

AL-5001 (FAA)

RNAV (GPS) RWY 19R

BETHEL (BET)(PABE)

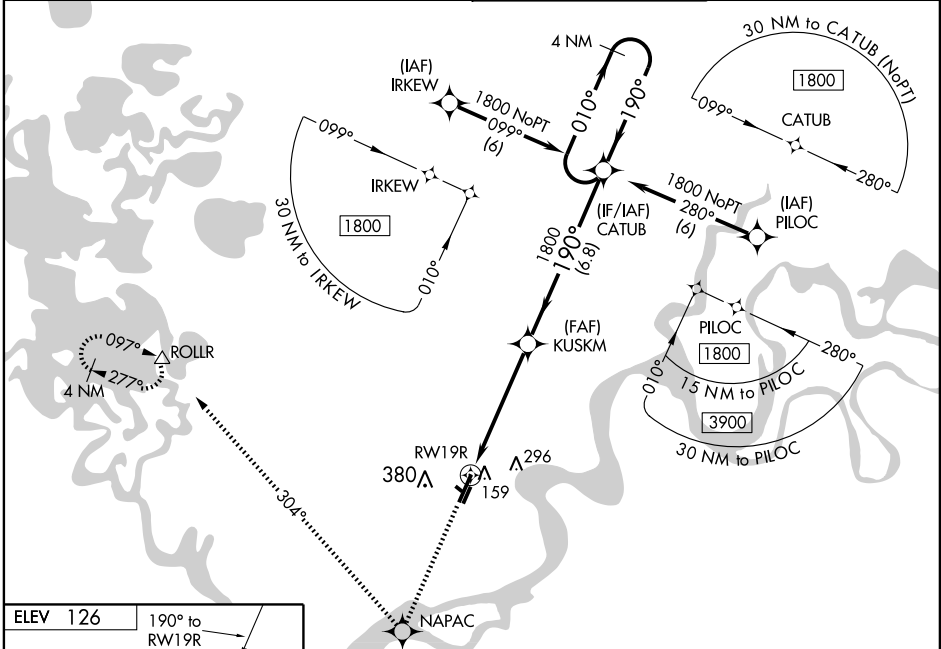
WAAS CH 70507 W19A	APP CRS 190°	Rwy Idg 6400 TDZE 118 Apt Elev 126
---------------------------------	------------------------	---

W Circling to Rwy 12-30 and 1R-19L NA at night.
 For inoperative MALS, increase LPV all Cats visibility to RVR 5000.
 Circling NA west of Rwy 1L-19R.
 For uncompensated Baro-VNAV systems, LNAV/VNAV NA below -25°C (-13°F) or above 48°C (118°F).
 DME/DME RNP-0.3 NA.



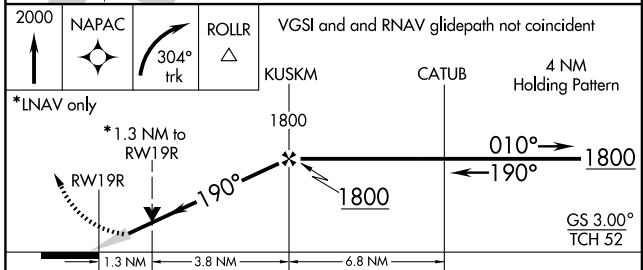
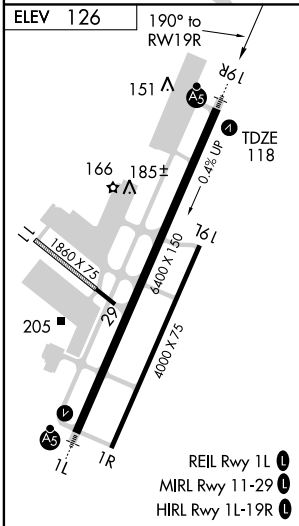
MISSED APPROACH: Climb to 2000 direct NAPAC and right turn via 304° track to ROLLR and hold.

ATIS 119.8	ANCHORAGE CENTER 125.2 372.0	BETHEL TOWER * 118.7 (CTAF) 0	GND CON 121.7
----------------------	--	---	-------------------------



AK, 22 OCT 2009 to 17 DEC 2009

AK, 22 OCT 2009 to 17 DEC 2009



CATEGORY	A	B	C	D
LPV DA		368/24	250 (300-½)	
LNAV/VNAV DA		459/40	341 (400-¾)	
LNAV MDA	560/24	442 (500-½)	560/40 442 (500-¾)	560/50 442 (500-1)
CIRCLING	560-1 434 (500-1)	580-1 454 (500-1)	600-1½ 474 (500-1½)	680-2 554 (600-2)

BETHEL, ALASKA
 Amdt 1 09295

60° 47' N-161° 50' W

BETHEL (BET)(PABE) RNAV (GPS) RWY 19R