

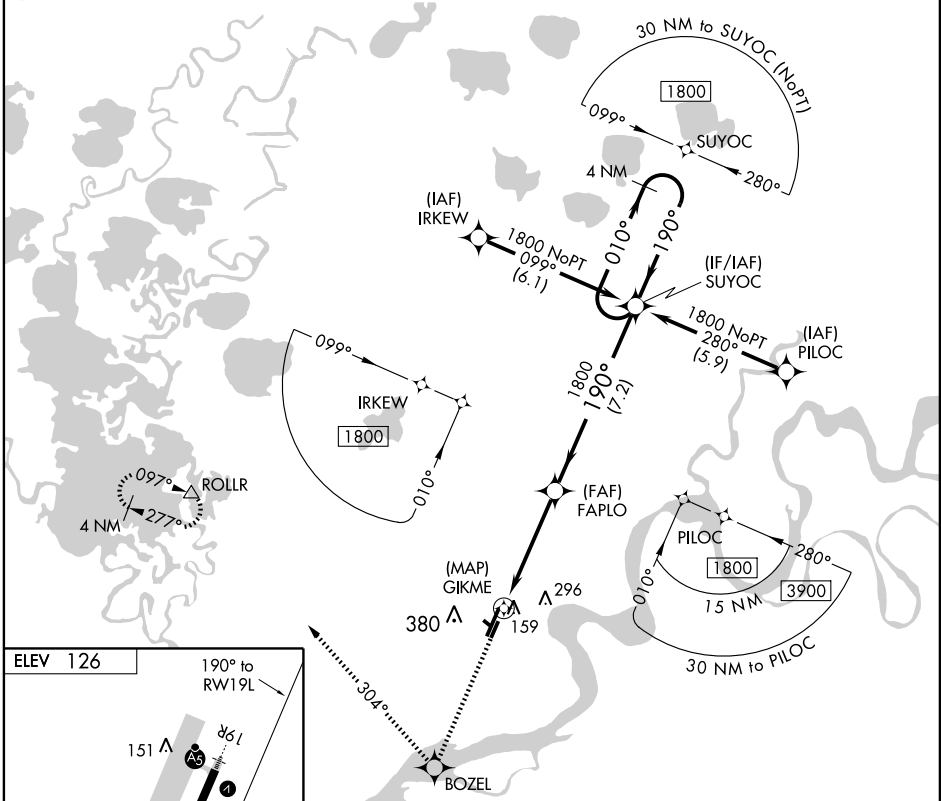
# RNAV (GPS) RWY 19L

BETHEL (BET)(PABE)

APP CRS <b>190°</b>	Rwy Idg <b>4000</b>
	TDZE <b>119</b>
	Apt Elev <b>126</b>

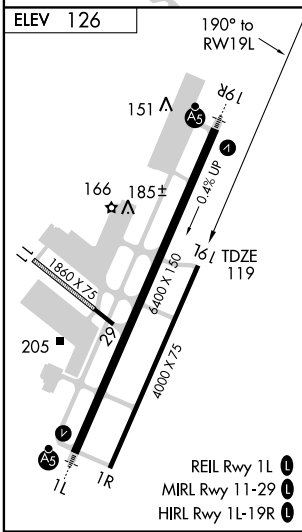
<p><b>▼</b> Circling to Rwy 12-30 and 1R-19L NA at night. Circling NA west of Rwy 1L-19R. DME/DME RNP-0.3 NA. Procedure NA at night.</p>	<p>MISSED APPROACH: Climb to 2000 direct BOZEL and right turn via 304° track to ROLLR and hold.</p>
--	---

<p>ATIS <b>119.8</b></p>	<p>ANCHORAGE CENTER <b>125.2 372.0</b></p>	<p>BETHEL TOWER ★ <b>118.7 (CTAF) 0</b></p>	<p>GND CON <b>121.7</b></p>
------------------------------	--	---	---------------------------------



AK, 22 OCT 2009 to 17 DEC 2009

AK, 22 OCT 2009 to 17 DEC 2009



2000	BOZEL	ROLLR	4 NM Holding Pattern	
↑	✦	△		
		304° trk		
GIKME		FAPLO	SUYOC	
0.6 NM to GIKME		1800	1800	
≤ 3.04° TCH 50		190°	010°	
0.5 0.6		4 NM	7.2 NM	
CATEGORY	A	B	C	D
LNAV MDA	520-1	401 (400-1)	520-1¼	401 (400-¼)
CIRCLING	520-1	580-1	600-1½	680-2
	394 (400-1)	454 (500-1)	474 (500-1½)	554 (600-2)