

BETHEL, ALASKA

AL-5001 (FAA)

# LOC/DME BC RWY 1L

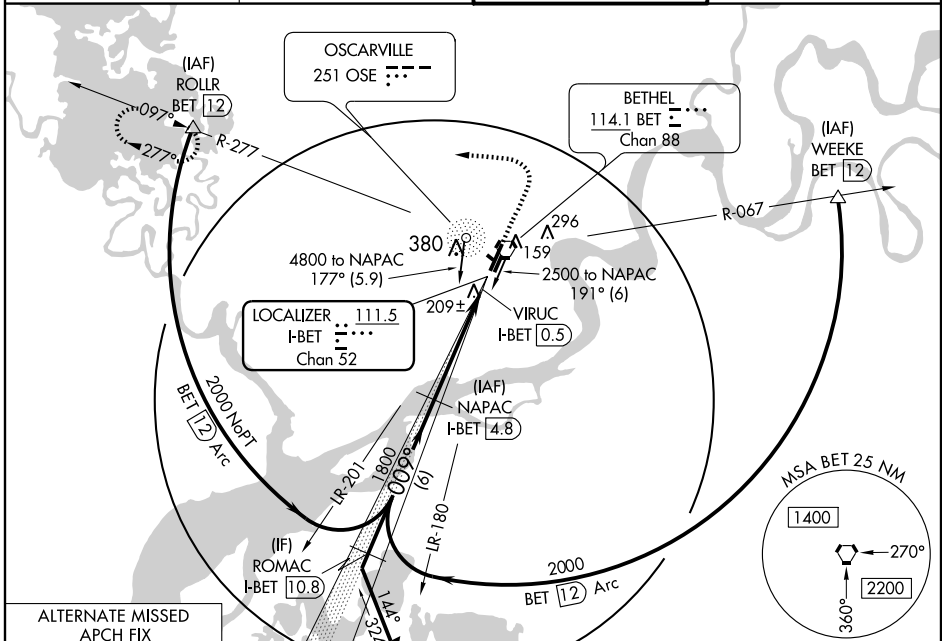
BETHEL (BET)(PABE)

LOC/DME I-BET <b>111.5</b> Chan 52	APP CRS <b>009°</b>	Rwy Idg <b>6400</b>
		TDZE <b>125</b>
		Apt Elev <b>126</b>

**▼** Circling to Rwy 12-30 and 1R-19L NA at night.  
For inoperative MALS, increase Cat D visibility to RVR 5000.  
Circling NA west of Rwy 1L-19R.

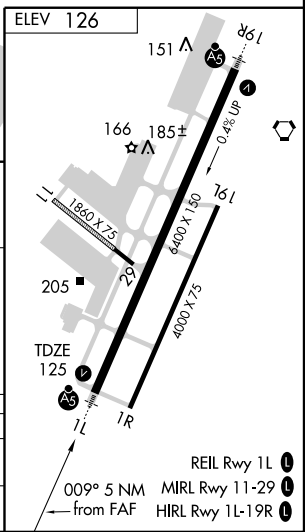
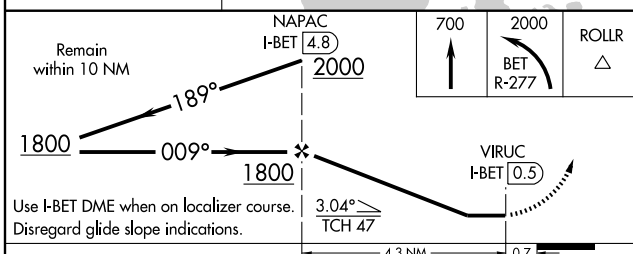
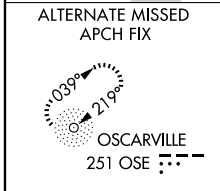
**MALS**  
MISSED APPROACH: Climb to 700, then climbing left turn to 2000 via BET VORTAC R-277 to ROLLR/BET 12 DME and hold.

ATIS <b>119.8</b>	ANCHORAGE CENTER <b>125.2 372.0</b>	BETHEL TOWER ★ <b>118.7</b> (CTAF) <b>0</b>	GND CON <b>121.7</b>
----------------------	--	--	-------------------------



AK, 22 OCT 2009 to 17 DEC 2009

AK, 22 OCT 2009 to 17 DEC 2009



CATEGORY	A	B	C	D
S-1L	460/24 335 (400-½)		460/40 335 (400-¾)	
CIRCLING	520-1 394 (400-1)	580-1 454 (500-1)	600-1½ 474 (500-1½)	680-2 554 (600-2)

BETHEL, ALASKA  
Amdt 6 09295

60° 47' N-161° 50' W

# BETHEL (BET)(PABE)

## LOC/DME BC RWY 1L