

WILLIAMSBURG, VIRGINIA

RNAV (GPS) RWY 5

APCH CRS	Rwy Idg	5018
050°	TDZE	41
	Arpt Elev	41

AL-3214 [USA]

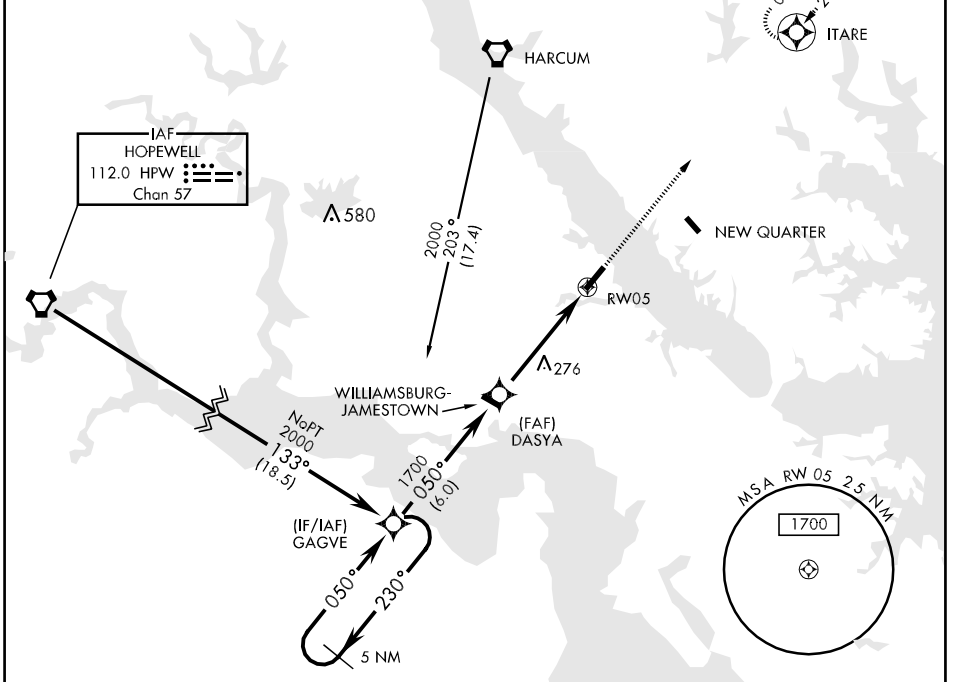
CAMP PEARY LNDG STRIP (KW94)

▼ Use Williamsburg-Jamestown altimeter setting. When not received, use Newport News/Williamsburg Intl altimeter setting and increase all MDAs 20 feet and increase LNAV CAT C and D vis ¼ mile. Restricted airfield, PPR. Contact Camp Peary Ops prior to landing.

MISSED APPROACH: Climb to 2000 direct ITARE and hold.

WILLIAMSBURG-JAMESTOWN AWOS-3	NORFOLK APP CON
120.625	125.7 335.625

DME/DME RNP-0.3 NA
 Procedure NA for arrivals at HPW VORTAC via V189-260 northbound.
 Visibility reduction by helicopters NA.
 Procedure NA at night.



NE-3, 22 OCT 2009 to 19 NOV 2009

NE-3, 22 OCT 2009 to 19 NOV 2009

2000		ITARE		ELEV 41
GAGVE		DASYA		RW05
2000		1700		
3.04° TCH 45		5.0 NM		TDZE 41
230°		050°		
CATEGORY	A	B	C	D
LNAV MDA	560-1	519 (600-1)	560-1½ 519 (600-1½)	560-1¾ 519 (600-1¾)
CIRCLING	560-1	519 (600-1)	560-1½ 519 (600-1½)	620-2 579 (600-2)

LRL Rwy 5-23

WILLIAMSBURG, VIRGINIA
 Orig A 09127

37°18'N-76°38'W

CAMP PEARY (KW94)

RNAV (GPS) RWY 5