

WILLIAMSBURG, VIRGINIA

RNAV (GPS) RWY 23

APCH CRS	Rwy Idg	5018
230°	TDZE	34
	Arpt Elev	41

AL-3214 [USA]

CAMP PEARY LNDG STRIP (KW94)

Use Williamsburg-Jamestown altimeter setting. When not received, use Newport News/Williamsburg Intl altimeter setting and increase all MDAs 20 feet and increase LNAV CAT C vis ¼ mile. Restricted airfield, PPR. Contact Camp Peary Ops prior to landing.

MISSED APPROACH: Climb to 2000 direct GAGVE and hold.

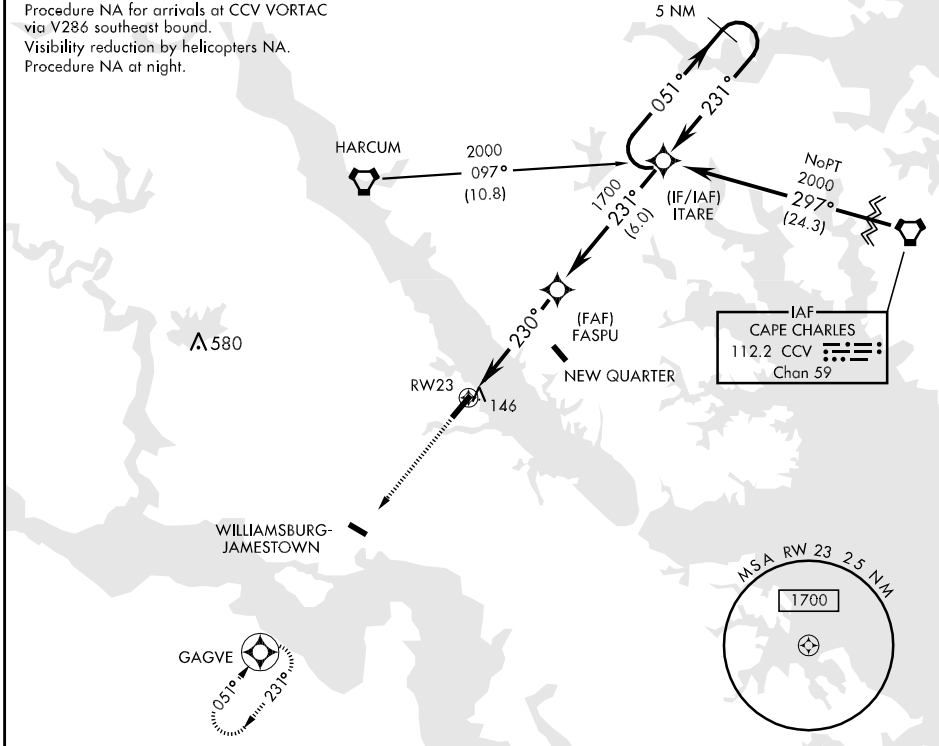
WILLIAMSBURG-JAMESTOWN AWOS-3

NORFOLK APP CON

120.625

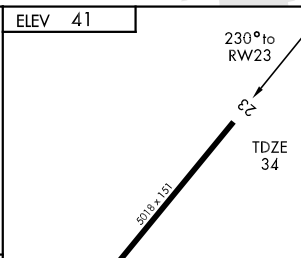
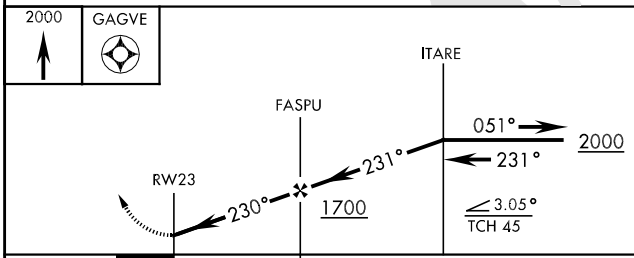
125.7 335.625

DME/DME RNP-0.3 NA
 Procedure NA for arrivals at CCV VORTAC via V286 southeast bound.
 Visibility reduction by helicopters NA.
 Procedure NA at night.



NE-3, 22 OCT 2009 to 19 NOV 2009

NE-3, 22 OCT 2009 to 19 NOV 2009



CATEGORY	A	B	C	D
LNAV MDA	420-1	386 (400-1)	420-1¼	386 (400-1¼)
CIRCLING	500-1	459 (500-1)	500-1½	620-2
		459 (500-1½)	579 (600-2)	

LIRL Rwy 5-23

WILLIAMSBURG, VIRGINIA
 Orig 09127

37° 18' N-76° 38' W

CAMP PEARY (KW94)

RNAV (GPS) RWY 23