

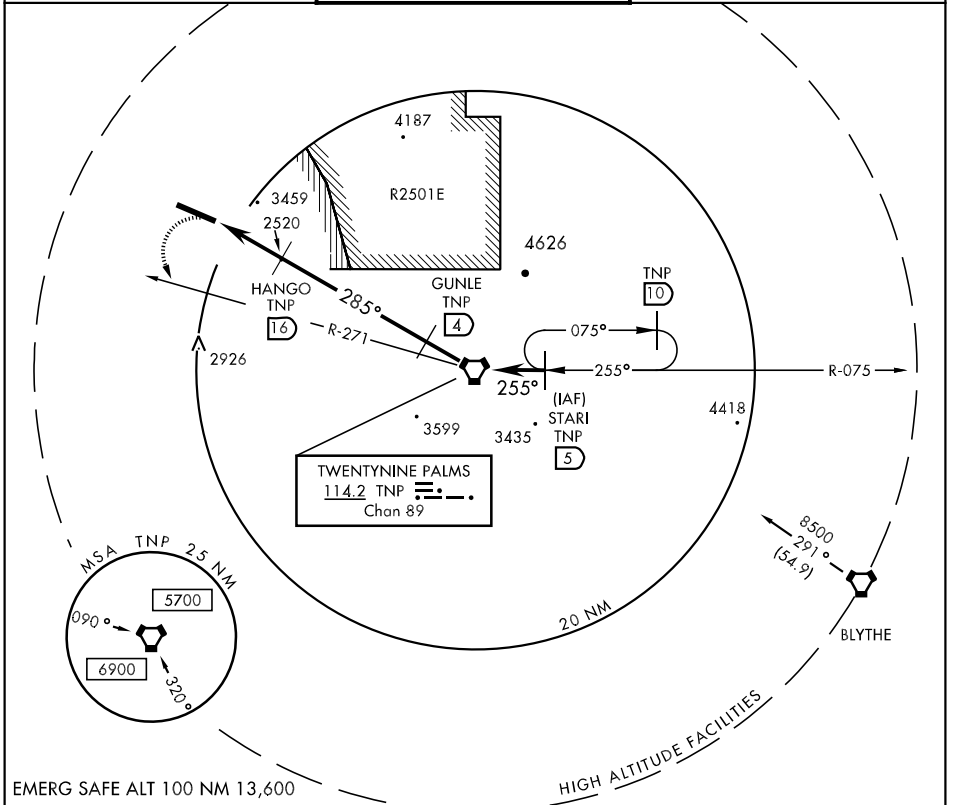
| | | | | |
|--------------------------------|------------------|---|---------------|------------------------------|
| VORTAC TNP 114.2 Chan 89 | APCH CRS 285° | Rwy Idg 8015 TDZE 2022 Arprt Elev 2051 | AL-3160 [USN] | TWENTYNINE PALMS SELF (KNXP) |
|--------------------------------|------------------|---|---------------|------------------------------|

* When ALS inop, increase CAT A to 1¼ miles, CAT B to 1½ miles, CAT CD to 3 miles.
 ** Circling not authorized N of Rwy 10-28.



MISSED APPROACH: Climbing left turn to 6000 via TNP VORTAC R-271 direct TNP. Then via TNP R-075 to STARI and hold.

| | | |
|----------------|---|------------------------|
| ATIS 386.35 | TWENTYNINE PALMS TOWER 135.525 340.2 | GND CON 363.35 41.7 |
|----------------|---|------------------------|



SW-3, 22 OCT 2009 to 19 NOV 2009

SW-3, 22 OCT 2009 to 19 NOV 2009

| | | | | |
|---|---------------------------|--|---------------------------|--------------------------------|
| | | | STARI R-075 | ELEV 2051 |
| 6000 TNP R-271 | 6000 TNP R-075 | 6000 TNP R-075 | 6000 STARI R-075 | 6000 TWR TDZE 2022 |
| HANGO | | GUNLE | VORTAC | 5000 4000 3600 5.5 NM |
| ZIKEG | | 3480-1 1458 (1500-1) 3480-1½ 1458 (1500-1½) 3480-2¾ 1458 (1500-2¾) | | |
| 3480-1¼ 1429 (1500-1¼) 3480-1½ 1429 (1500-1½) | | 3480-3 1429 (1500-3) | | |
| CATEGORY | A | B | C | D |
| S-28 * | 3480-1 1458 (1500-1) | 3480-1½ 1458 (1500-1½) | 3480-2¾ 1458 (1500-2¾) | |
| CIRCLING ** | 3480-1¼ 1429 (1500-1¼) | 3480-1½ 1429 (1500-1½) | 3480-3 1429 (1500-3) | |
| HIRL Rwy 10-28 | | | | 285° 21.8 NM from VORTAC |