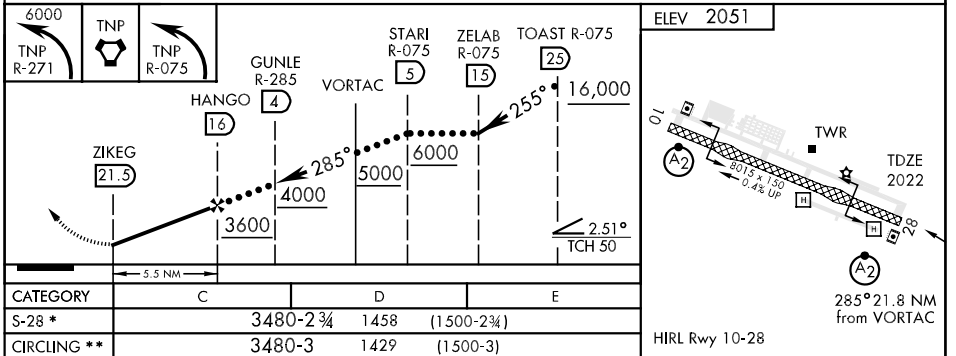
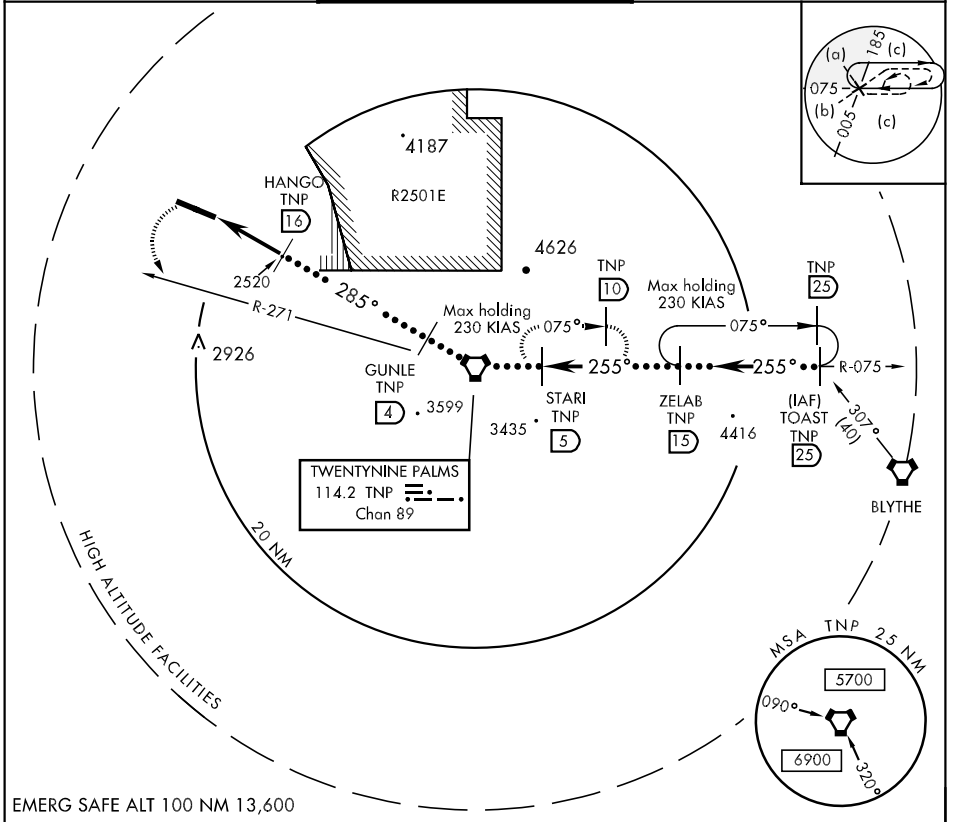


VOR/DME TNP 114.2 Chan 89	APCH CRS 285°	Rwy Idg TDZE 2022 Arprt Elev 2051	JAL-3160 [USN]	TWENTYNINE PALMS SELF (KNXP)
---	-------------------------	---	----------------	------------------------------

A2 MISSED APPROACH: Climbing left turn to 6000 via TNP VORTAC R-271 direct TNP. Then via TNP R-075 to STARI and hold.

A2 * When ALS inop, increase vis CAT CDE to 3 miles.
 ** Circling not authorized N of Rwy 10-28.

ATIS 386.35	PALMS TOWER 135.525 340.2	GND CON 363.35 41.7
-----------------------	-------------------------------------	-------------------------------



SW-3, 22 OCT 2009 to 19 NOV 2009

SW-3, 22 OCT 2009 to 19 NOV 2009