

08353

CACTI-FIVE DEPARTURE (CACTI5 • TNP)

TWENTYNINE PALMS SELF (KNXP)

TWENTYNINE PALMS, CALIFORNIA

ATIS 386.35
 GND CON
 363.35 41.7
 TWENTYNINE PALMS TOWER
 135.525 340.2
 LOS ANGELES CENTER
 128.15 285.6

SHL-3160 [USN]

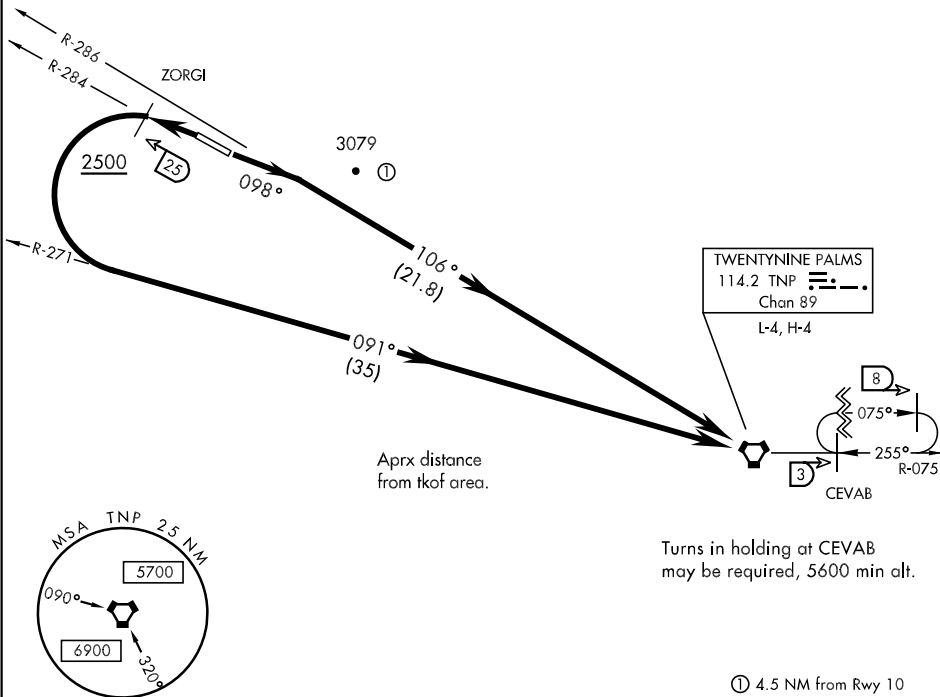
Rwy	Knots	60	120	180	240	300	360
* 10 (A) V/V(fpm)		285	570	855	1140	1425	1710
** 10 (B) V/V(fpm)		315	630	945	1260	1575	1890
† 28 (C) V/V(fpm)		235	470	705	940	1175	1410

* Minimum ** Civil minimum † ATC Climb Rate

(A) to 3300

(B) to 3400

(C) to 2500



SW-3, 22 OCT 2009 to 19 NOV 2009

SW-3, 22 OCT 2009 to 19 NOV 2009

DEPARTURE ROUTE DESCRIPTION

TAKE-OFF RWY 10: Climb via heading 098° to intercept and proceed via TNP VORTAC R-286 to TNP.

TAKE-OFF RWY 28: Climb via TNP VORTAC R-284 to cross ZORGI at or above 2500. Then turn left to join and proceed via TNP R-271 to TNP.

CACTI-FIVE DEPARTURE (CACTI5 • TNP)

TWENTYNINE PALMS, CALIFORNIA
 TWENTYNINE PALMS SELF (KNXP)