

HUNTER LIGGETT, CALIFORNIA

# COPTER RNAV (GPS) RWY 32

APCH CRS	Rwy Idg	570
301°	TDZE	1017
	Arpt Elev	1017

AL-3073 (USA)

TUSI AHP (KHGT)

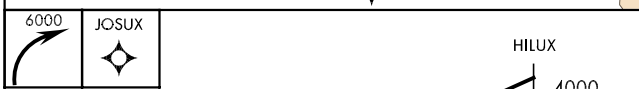
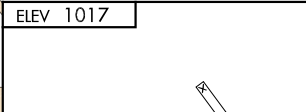
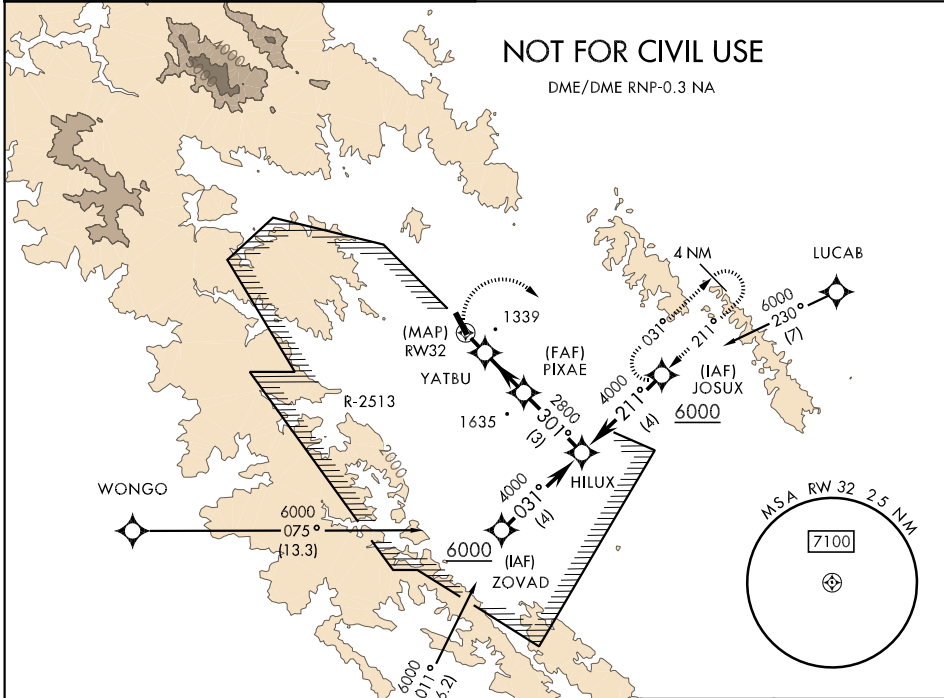
**▲ NA** Procedure NA when Fort Hunter-Liggett altimeter setting not available.

**▼** Limit Final and Missed Approach to 90 KIAS.

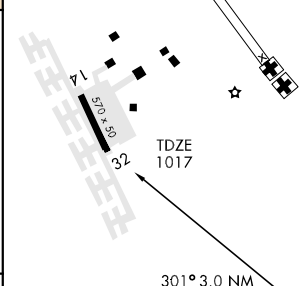
**MISSED APPROACH:** Climbing right turn to 6000 direct JOSUX and hold.

OAKLAND CENTER  
**128.7 307.0**

RANGE CON/OPS  
**41.05 126.2 229.5**



CATEGORY	COPTER	
LNAV MDA	1640-½	623 (700-½)



CATEGORY	COPTER	
LNAV MDA	1640-½	623 (700-½)

MIRL Rwy 14-32

HUNTER LIGGETT, CALIFORNIA  
Orig 08297

36°00'N-121°14'W

TUSI AHP (KHGT)

# COPTER RNAV (GPS) RWY 32

SW-3, 22 OCT 2009 to 19 NOV 2009

SW-3, 22 OCT 2009 to 19 NOV 2009