

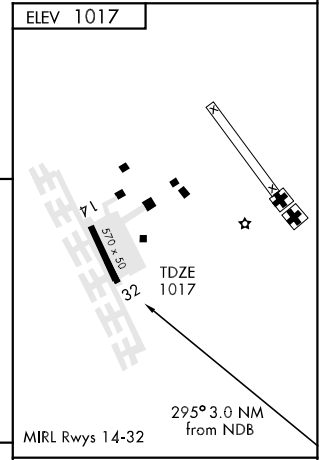
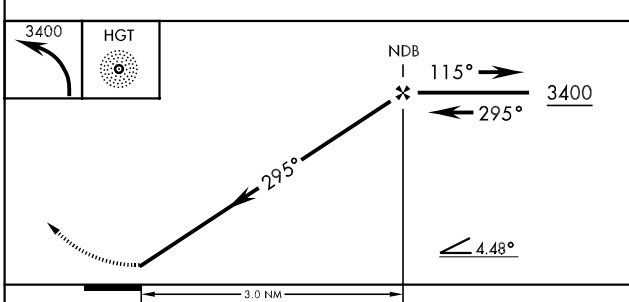
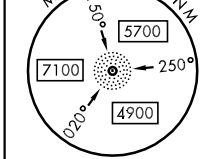
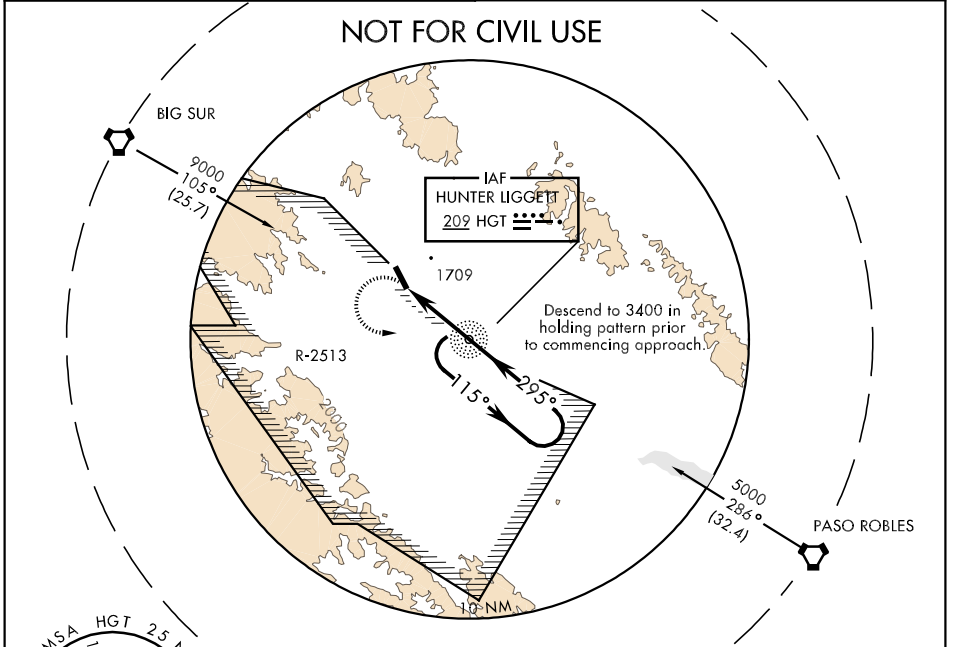
HUNTER LIGGETT, CALIFORNIA

# COPTER NDB RWY 32

NDB HGT <b>209</b>	APCH CRS <b>295°</b>	Rwy ldg TDZE <b>570</b> Arpt Elev <b>1017</b>	AL-3073 [USA]	TUSI AHP (KHGT)
-----------------------	-------------------------	--	---------------	-----------------

▲ NA Procedure NA when Fort Hunter-Liggett altimeter setting not available. MISSED APPROACH: Climbing left turn to 3400 direct HGT NDB and hold.

OAKLAND CENTER <b>128.7 307.0</b>	RANGE CON/OPS <b>41.05 126.2 229.5</b>
--------------------------------------	---



CATEGORY	COPTER			FAF to MAP 3.0 NM					
H-32	1980-¾	963	(1000-¾)	Knots	45	60	75	90	105
				Min:Sec	4:00	3:00	2:24	2:00	1:43

HUNTER LIGGETT, CALIFORNIA 36°00'N-121°14'W TUSI AHP (KHGT)

Orig 08269

# COPTER NDB RWY 32

SW-3, 22 OCT 2009 to 19 NOV 2009

SW-3, 22 OCT 2009 to 19 NOV 2009