

LEXINGTON, OKLAHOMA

COPTER RNAV (GPS) RWY 35

APCH CRS	Rwy Idg	2005
355°	TDZE	1091
	Arpt Elev	1091

AL-2497 [USA]

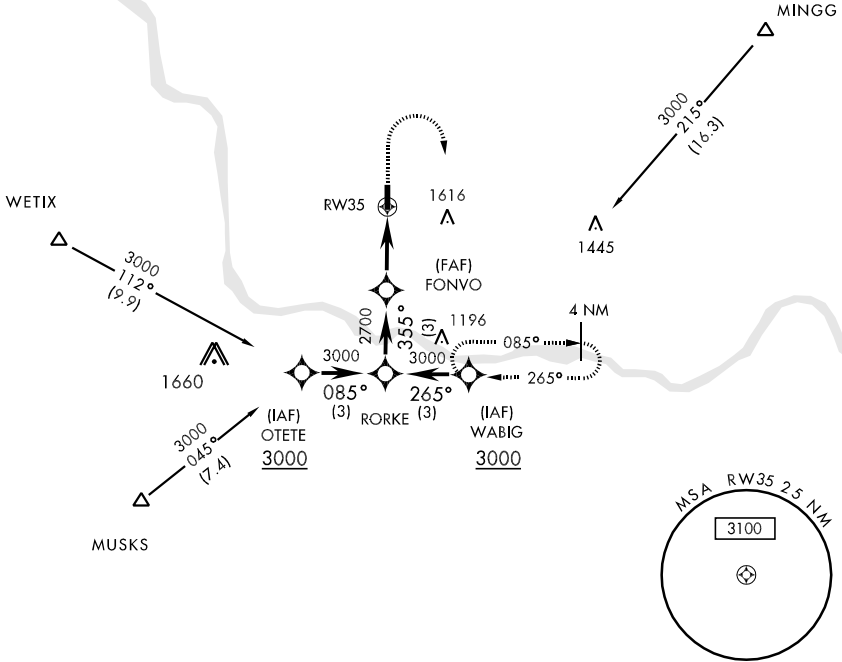
MULDROW AHP (KHMV)

<p>NA Obtain local altimeter setting on CTAF; when not received, use University of Oklahoma Westheimer altimeter setting minimums. DME/DME RNP-0.3 NA</p>	<p>MISSED APPROACH: Climbing right turn to 3000 direct WABIG and hold.</p>
--	---

FORT WORTH CENTER
128.1 322.4

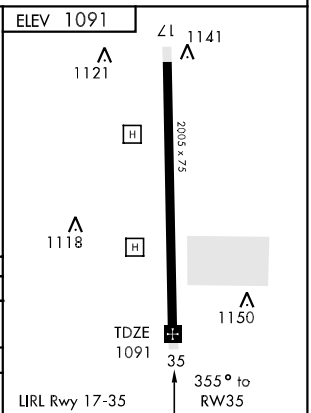
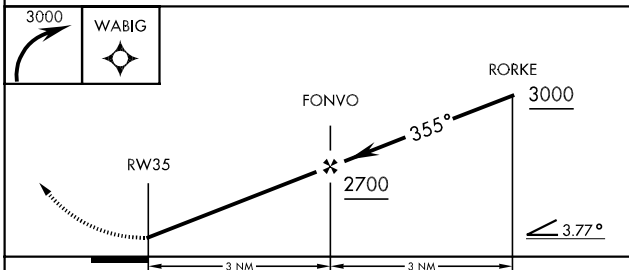
MULDROW OPS (Advsvy Svc only)
46.9 142.45 387.9 (CTAF)

Limit final and Missed Approach
airspeed to 90 KIAS.



SC-1, 22 OCT 2009 to 19 NOV 2009

SC-1, 22 OCT 2009 to 19 NOV 2009



CATEGORY	COPTER	
LNAV MDA	1500-1	409 (500-1)
UNIVERSITY OF OKLAHOMA WESTHEIMER ALTIMETER SETTING MINIMUMS		
LNAV MDA	1560-1	469 (500-1)

LEXINGTON, OKLAHOMA
Orig 08325

35°02'N-97°14'W

MULDROW AHP (KHMV)

COPTER RNAV (GPS) RWY 35