

LEXINGTON, OKLAHOMA

COPTER RNAV (GPS) RWY 17

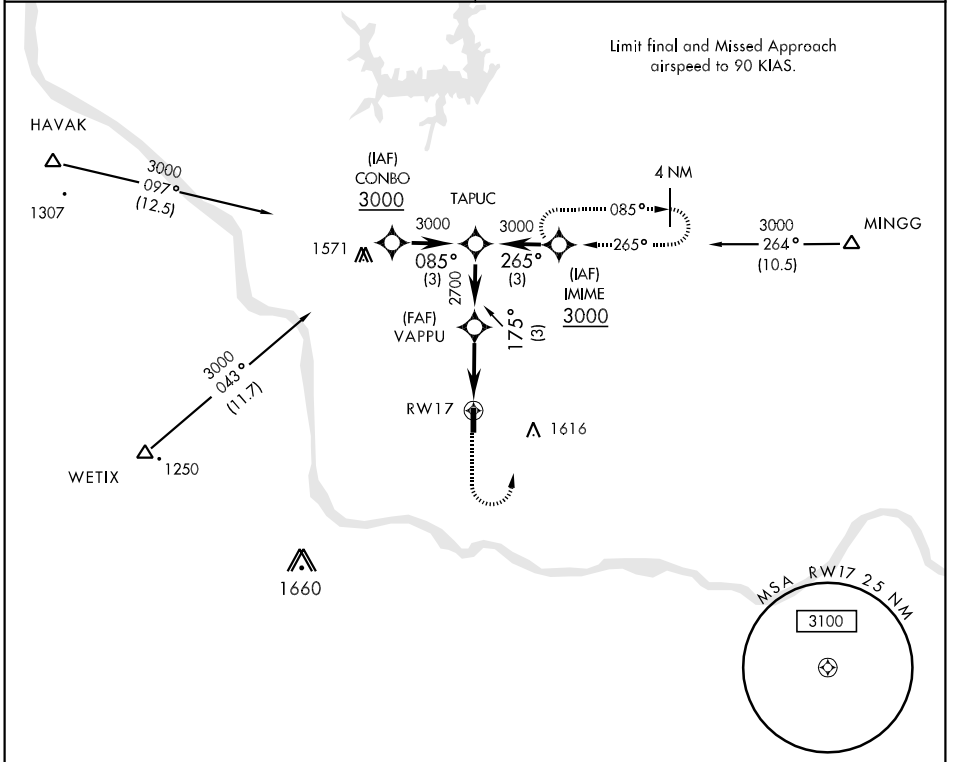
APCH CRS 175°	Rwy Idg 2005
	TDZE 1091
	Arprt Elev 1091

AL-2497 [USA]

MULDROW AHP (KHMY)

<p>▲ NA Obtain local altimeter setting on CTAF; when not received, use University of Oklahoma Westheimer altimeter setting minimums. DME/DME RNP-0.3 NA</p>	<p>MISSED APPROACH: Climbing left turn to 3000 direct IMIME and hold.</p>
--	--

<p>FORT WORTH CENTER 128.1 322.4</p>	<p>MULDROW OPS (Advsy Svc only) 46.9 142.45 387.9 (CTAF)</p>
---	---



		<p>3000 IMIME</p>	<p>ELEV 1091</p>	<p>175° to RWY 17</p>
<p>TDZE 1091</p>		<p>1121</p>	<p>1118</p>	<p>1141</p>
<p>2005 x 75</p>		<p>1150</p>	<p>35</p>	<p>LIRL Rwy 17-35</p>
CATEGORY	COPTER			
LNAV MDA	1540-1 449 (500-1)			
UNIVERSITY OF OKLAHOMA WESTHEIMER ALTIMETER SETTING MINIMUMS				
LNAV MDA	1600-1 509 (600-1)			

LEXINGTON, OKLAHOMA
Orig 08325

35°02'N-97°14'W

MULDROW AHP (KHMY)

COPTER RNAV (GPS) RWY 17

SC-1, 22 OCT 2009 to 19 NOV 2009

SC-1, 22 OCT 2009 to 19 NOV 2009